

10 YEARS OF  
BREAKTHROUGHS  
A HEALTHIER  
FUTURE



60

Accelerated development of appropriate patient therapies: a sustainable, multi-stakeholder approach from research to treatment-outcomes

# TOWARDS AN ADAPTIVE MINDSET

S. Corriol-Rohou, AstraZeneca; J. Bouvy, NICE; H-G. Eichler (EMA); A. Broekmans (Lygature)

## Facts & Figures

Start date:	01/07/2015
End date:	30/04/2018
Contributions	
IMI funding:	1 130 000 €
EFPIA in kind:	2 187 631 €
Other:	760 715 €
Total Cost:	4 078 146 €
Project website:	adaptsmart.eu

## Challenges

- High attrition rates in medicine development
  - Regulatory environment lagging behind rapidly evolving science,
  - No longer financially viable R&D and pricing/reimbursement models
- Need for change in people mindset to support a change in the drug development paradigm

## Take home messages

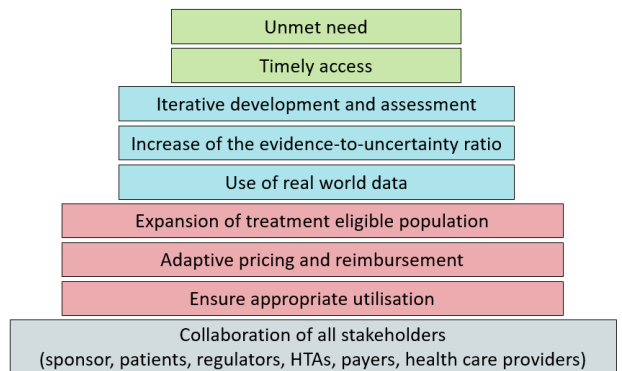
- To successfully deliver a MAPPs product:
- Are engagement criteria met?
  - Smartly combine 'building blocks'
  - Early multi-stakeholders' engagement
  - Make best use of the MAPPs pathway
  - Consider managed entry agreement

## Approach & Methodology

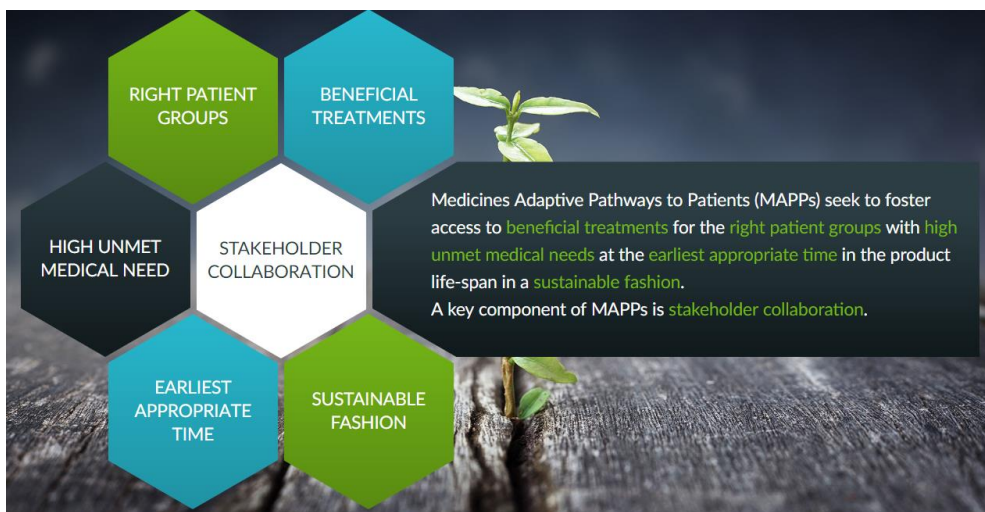
An unprecedented multi-stakeholder platform to address the operational and strategic challenges within the current EU regulatory framework



## Smart use of building blocks



## VISIT THE ADAPT SMART INFOGRAPHIC



innovative medicines initiative



This work has received support from the EU/EFPIA/[Associated Partner] Innovative Medicines Initiative [2] Joint Undertaking ([ADAPTS SMART] grant no [115890]).