



eTRIKS European Translational Information & Knowledge Management Services

Kavita Rege^{1,*}, Sascha Herzinger^{1,*}, Wei Gu^{1,*}, Reinhard Schneider¹ on behalf of the eTRIKS consortium

¹Luxembourg Centre for Systems Biomedicine (LCSB), University of Luxembourg (UL)

*All the authors contributed equally to this work.

Facts & Figures

Start date	01/10/2012
End date	30/09/2018
Contributions	
IMI funding	10 309 818 €
EFPIA in kind	10 795 178 €
Other	3 139 745 €
Total Cost	24 244 741 €
Project website	www.etricks.org

Challenge

Background and Motivations

Data intensive translational research requires

- Knowledge management environment
- Sustainable and integrated access to the data
- Reusable data and interactive visual-analytics

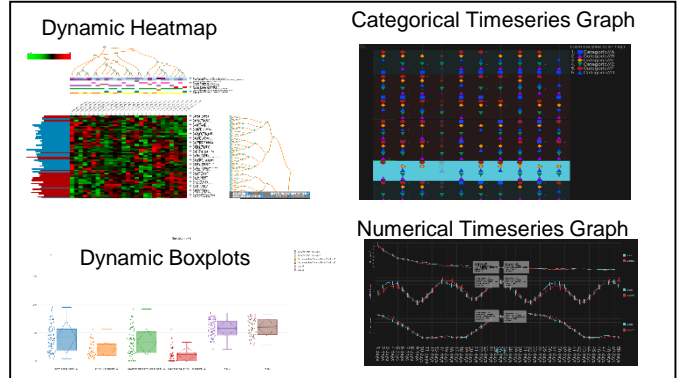
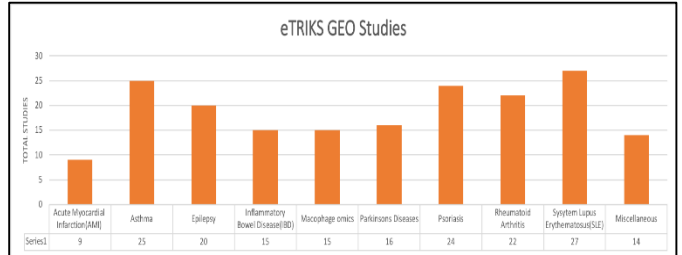
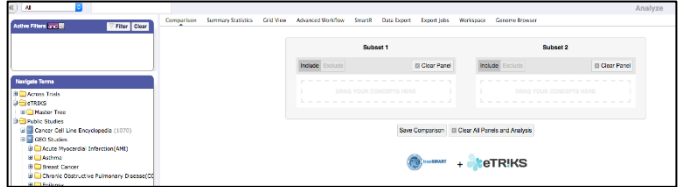
Project Highlights

IMI-eTRIKS focuses on building a sustainable KM platform that is essential for efficient and successful collaboration

- Supports data management throughout the life cycle of translational research projects
- Guarantees high quality data curation facilitating re-usability of the data
- Enables analysis and integration of highly complex clinical and multi-omics data
- Provides dynamic and interactive visual-analytics for data exploration, hypothesis generation

Results

eTRIKS' Public Server main deliverable



Value of IMI collaboration

10 Pharma + 6 Partners

WP Number	WP Name	WP Leads
WP1	Platform Deployment	CNRS/IPNV
WP2	Platform Deployment	Imperial/Sanofi/Pfizer
WP3	Data Standards	IDBS/Roche/CDISC/JOXF
WP4	Curation and Analysis	Luxembourg/Sanofi
WP5	Management and Sustainability	AstraZeneca/BioSci Consulting
WP6	Community and Outreach	Janssen/BioSci Consulting
WP7	Ethics	GSK/CNRS/Bayer/Sanofi

Approach & Methodology

Curation and Harmonisation

Format conversion

Cleansing and QC

- Misspelling
- Out of range
- Type error
- Language

Transformation

- Data format
- Derived data
- Impute missing data
- Data model

Standardisation

- Variable to ontology
- Value to ontology
- Convert to standard unit

↓

Integration

Dataset explorer, summary statistics

Impact & take home message

High-quality Datasets

- Over 180 curated public studies populated in the public server available at <https://public.etricks.org>
- Sustainability of public server guaranteed via collaboration with ELIXIR (LU)
- **IMI-Data Catalogue**, in collaboration with ELIXIR(LU) at <https://datacatalog.elixir-luxembourg.org>

Interactive Visual-analytics

- Interactive visual-analytics framework, **SmartR**, enables users to explore data and generate hypothesis (<http://etricks1.uni.lu/>)
- Basic data exploration by boxplots, line graphs, correlation analysis, survival analysis and logitregression
- Omics data analysis and links to other systems via interactive heatmap, Volcanoplot, IPAconnector

Supports over 40 IMI projects for their data integration