



# Improve preclinical and clinical data analysis. Now and tomorrow

Dominique Brees,  
Novartis Institutes for Biomedical Research  
SGG Translational Safety

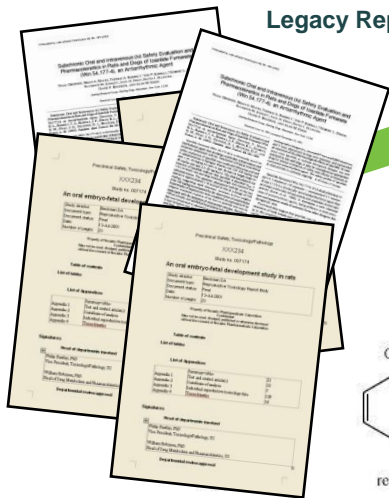
Keywords: databases, in silico, bioinformatics, biostatistics, systems biology, metanalysis, knowledge management, bench-to-bedside and benchside-to-bench, omics, data sharing, data vizualization...

## 1. Data collection

Public databases



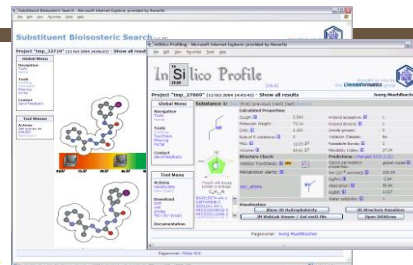
Legacy Reports



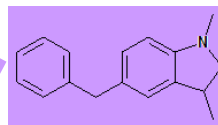
## 2. Data sharing and Integration



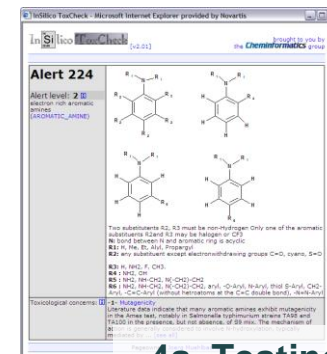
## 3. Model building



## 4b. Validation with new compounds



## 4a. Testing alerts



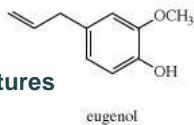
## 5. Refinement

(new structures or limited early toxicity studies)

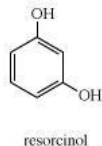
New Report



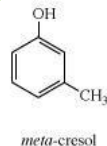
Chemical structures



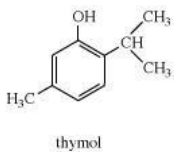
eugenol



resorcinol

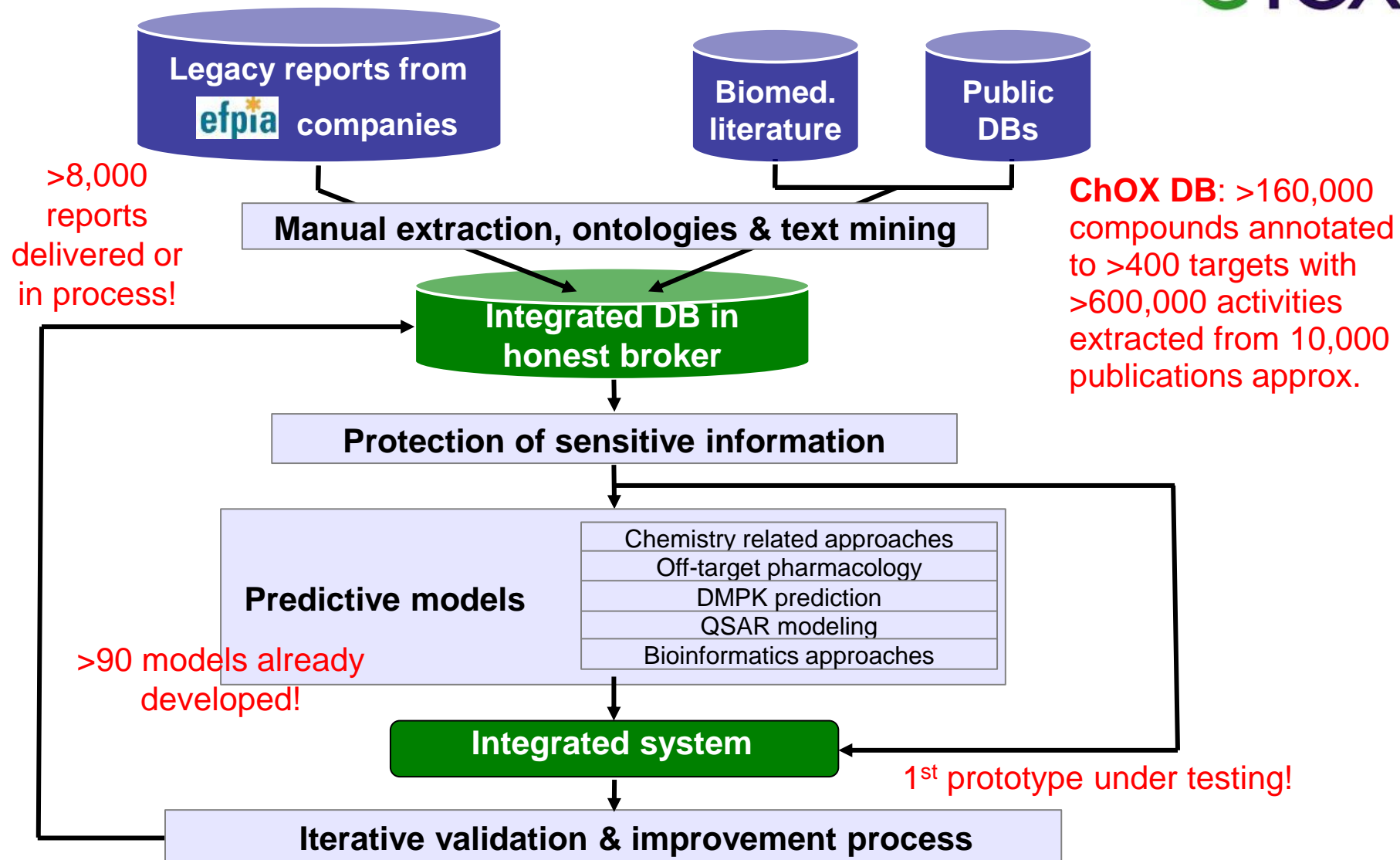


meta-cresol



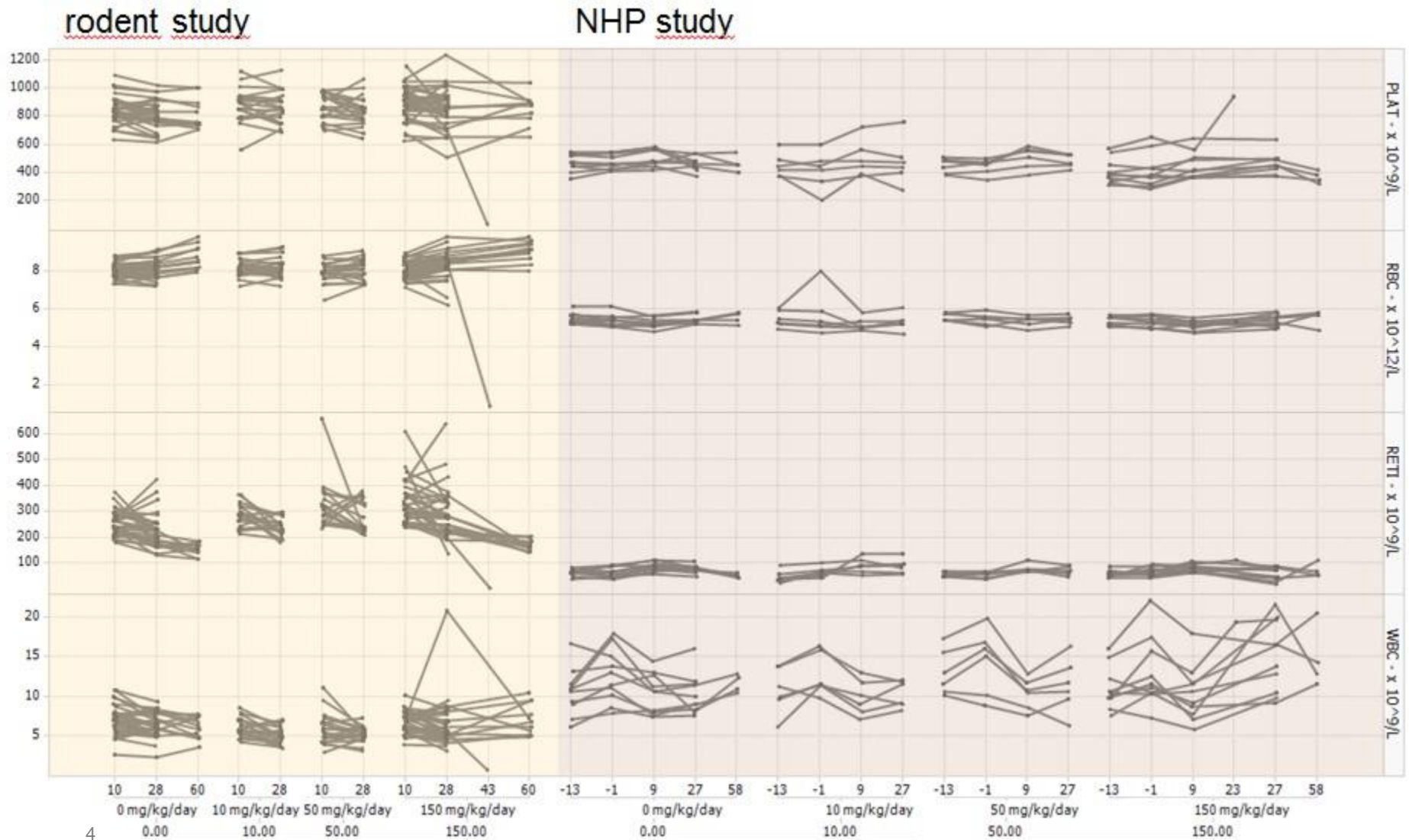
thymol

# Some achievements



➔ SEND database

# Example 2. Clinical-preclinical data. Internal data analysis tool preclinical



# Example 2 Internal data analysis tool

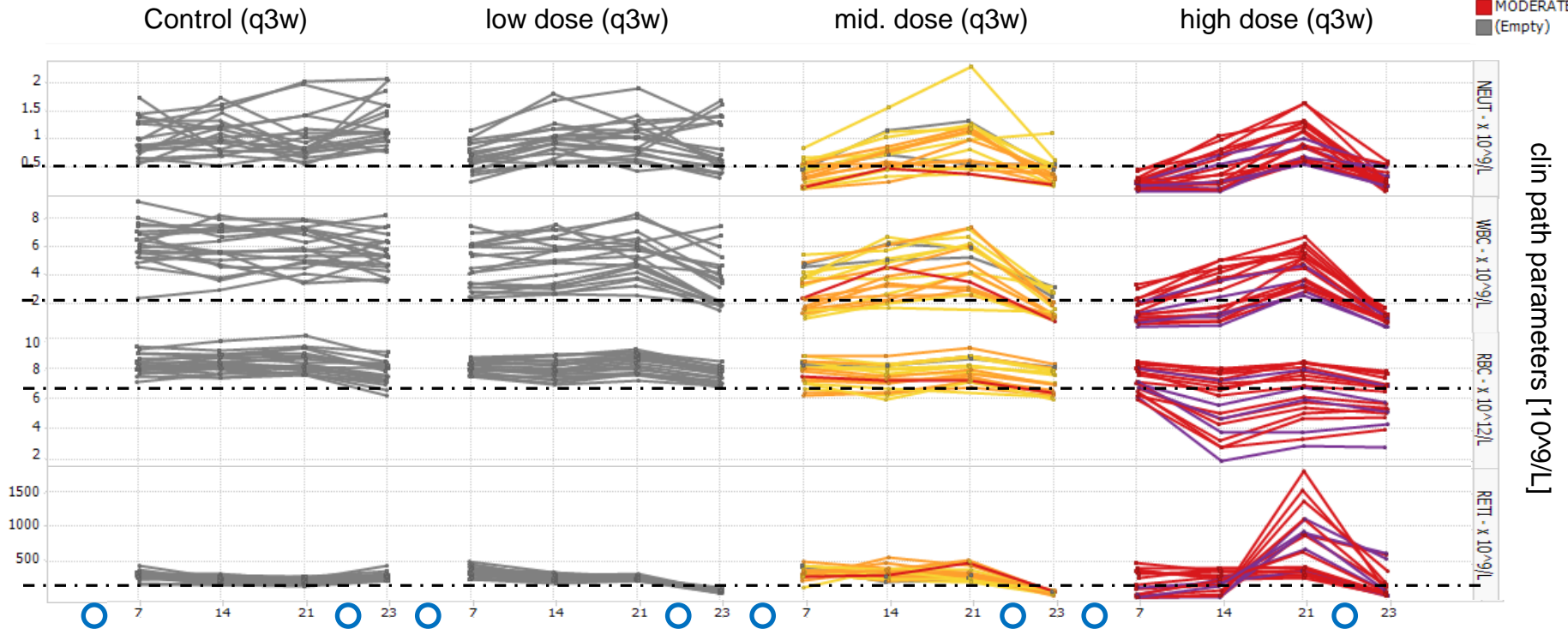
Clinical Pathology vs Pathology: grouped for study > dose group > days from 1st dose

Tissue: BONE MARROW, STERNUM

Finding: Hypocellular, hematopoietic

Color by:  
MISEV

- MARKED
- MILD
- MINIMAL
- MODERATE
- (Empty)



treatments on day 1 and 22

lowest control values

## Idea for proposal (example 2).

---

- **Statement of problem:** There is no single, repository of normative data which allows preclinical safety experts, physicians, clinical investigators, regulatory reviewers and others to have rapid access to normative animal and human data.
- **Solution to problem:** This proposal outlines a comprehensive approach to the creation, maintenance and ready access to “EUbase”, a comprehensive normative data base of preclinical and clinical data.
- **Building of data mining tools**
- **Artificial Intelligence to triage the relevant data.**

# Today.

## Point of care devices



- More patients
- Time course

## E-Watches



Sleep waves



Steps/day

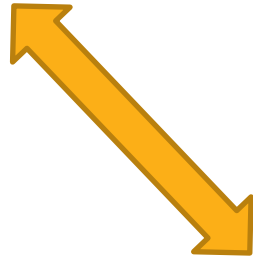


BMI index

Continuous data

# Tomorrow

Lab on a chip



Health care professional  
Computer



# Where can you help?

---

- Secured database
- Ontology
- Data collection
- Visualization
- Front end data mining
- Artificial intelligence
- New technologies to monitor biomarkers
- Validation of the new technologies
- Connectivity with Health care professionals, computer, algorithm for dosing, alert,....
- ...