

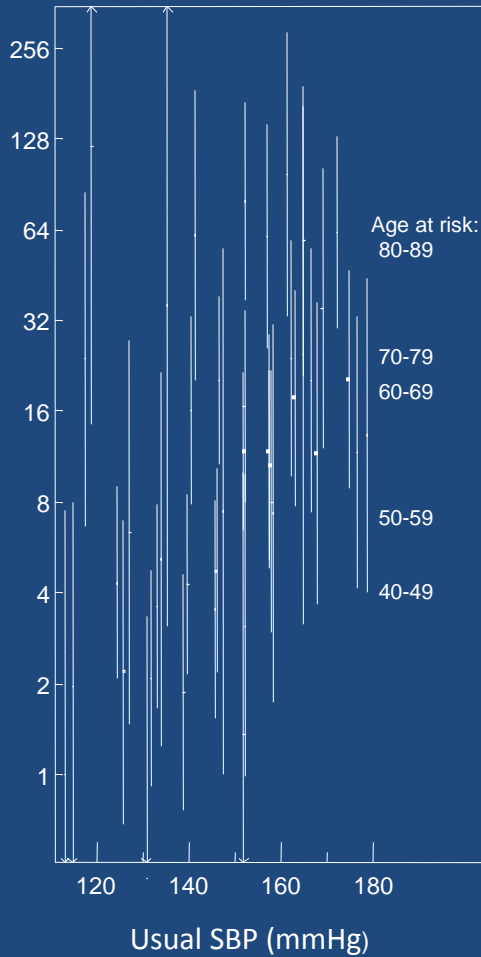


Dementias
Platform^{UK}
Medical Research Council

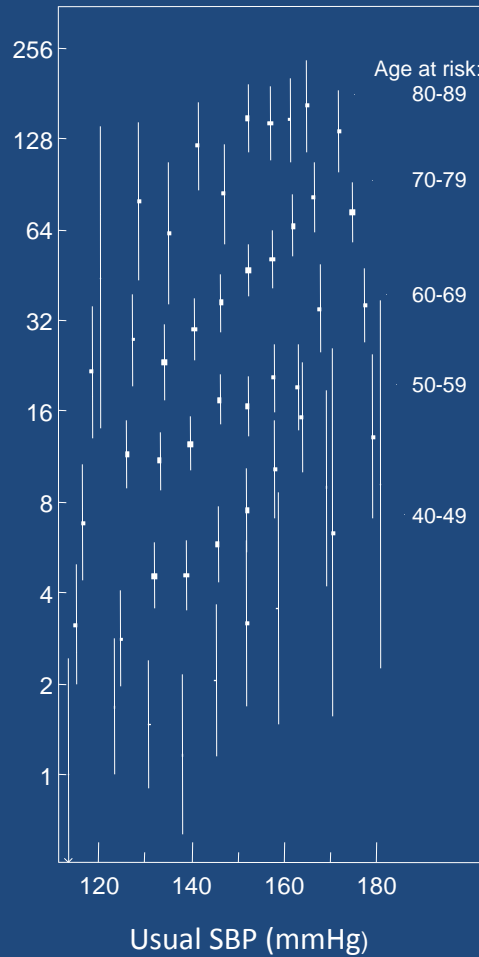
Creating the context for a new generation of
highly targeted, highly informative
clinical trials

The precision medicine challenge

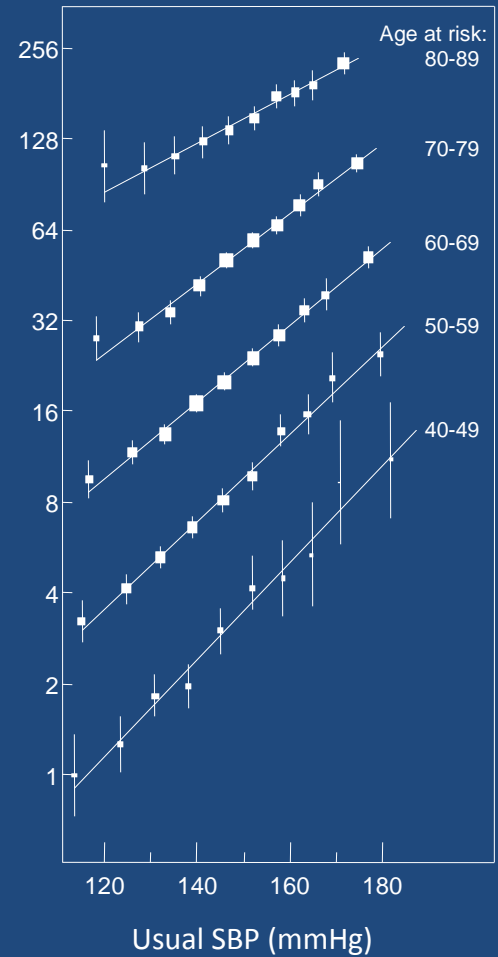
5000 people



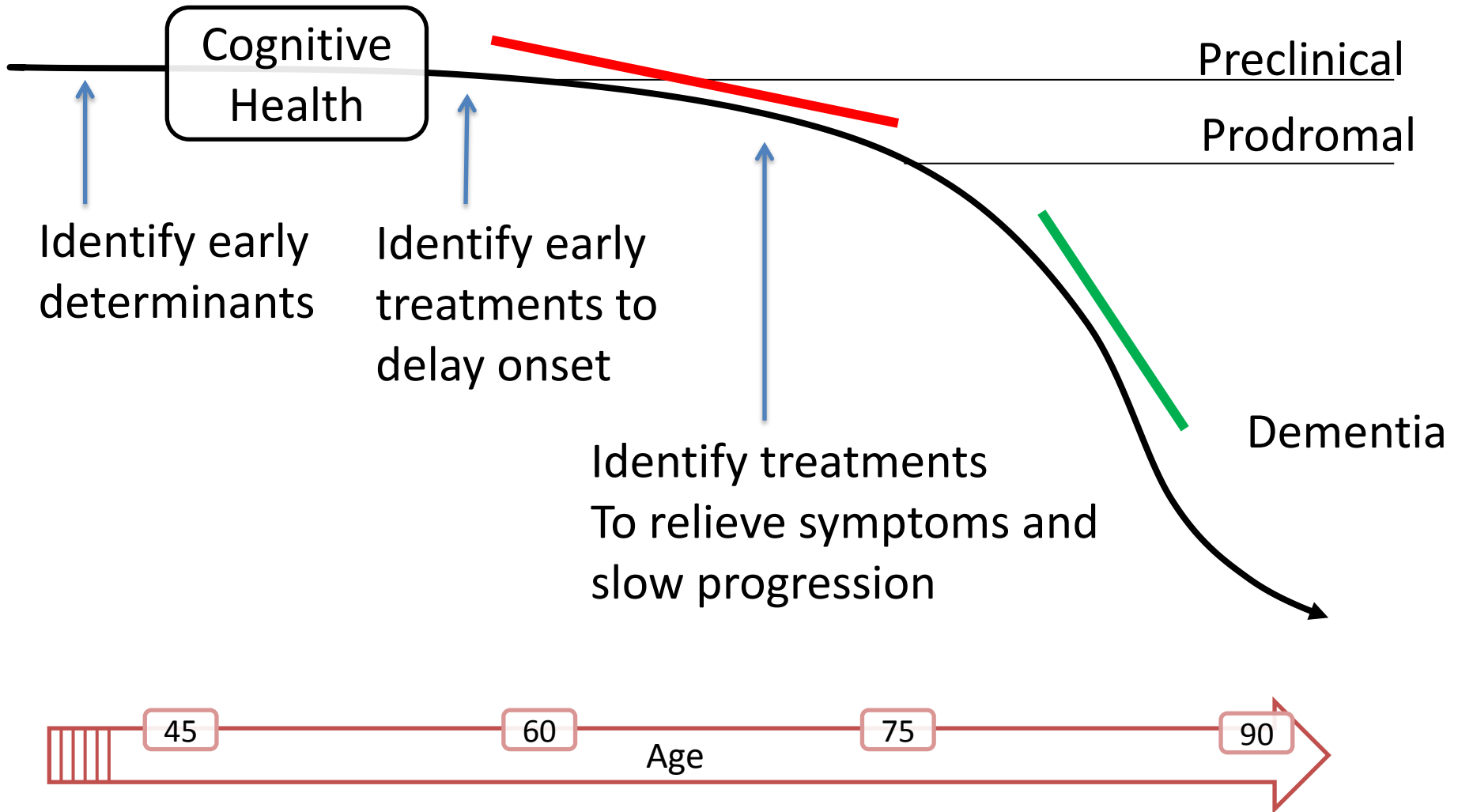
50,000 people



500,000 people



The experimental medicine challenge

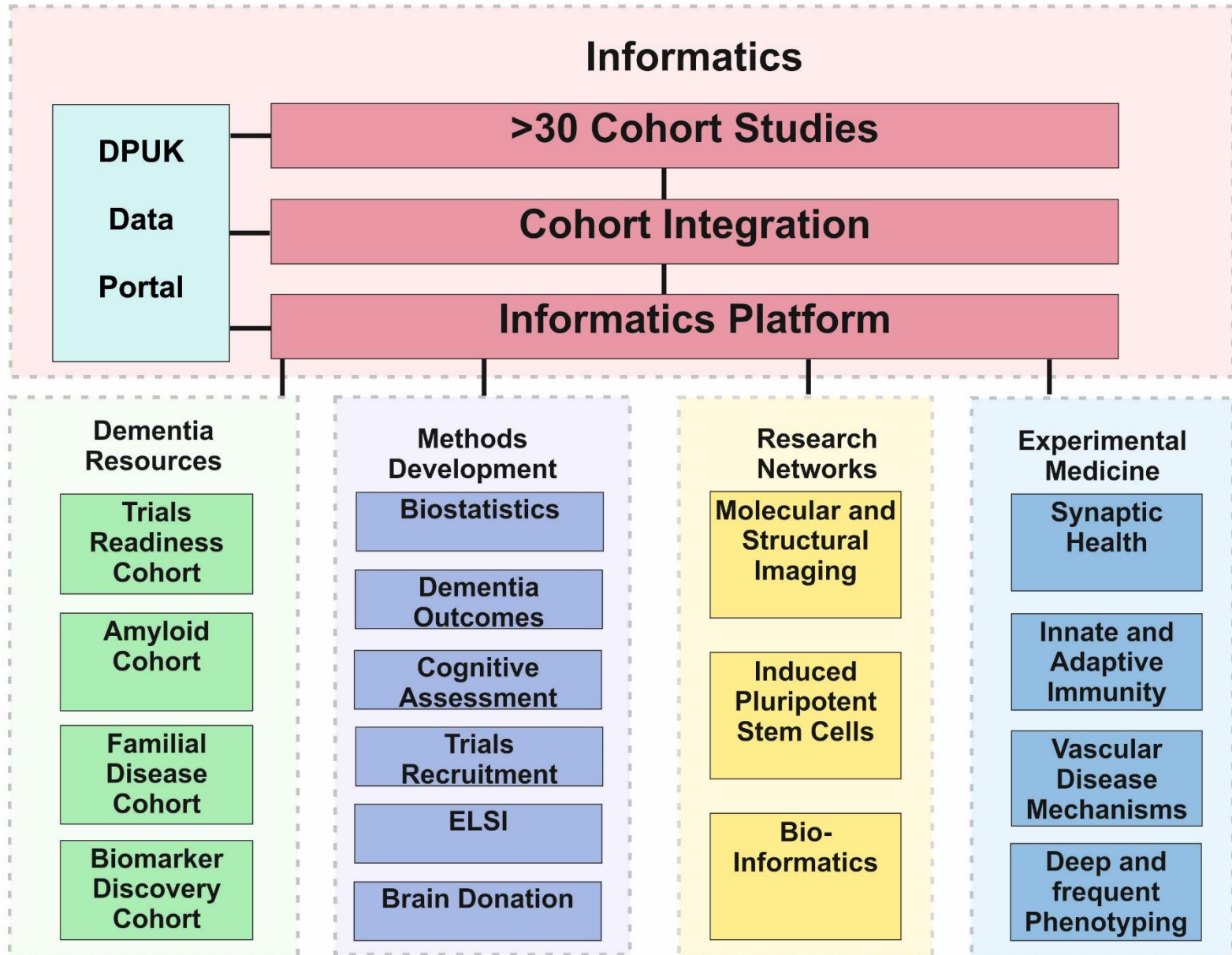


Core enabling utilities

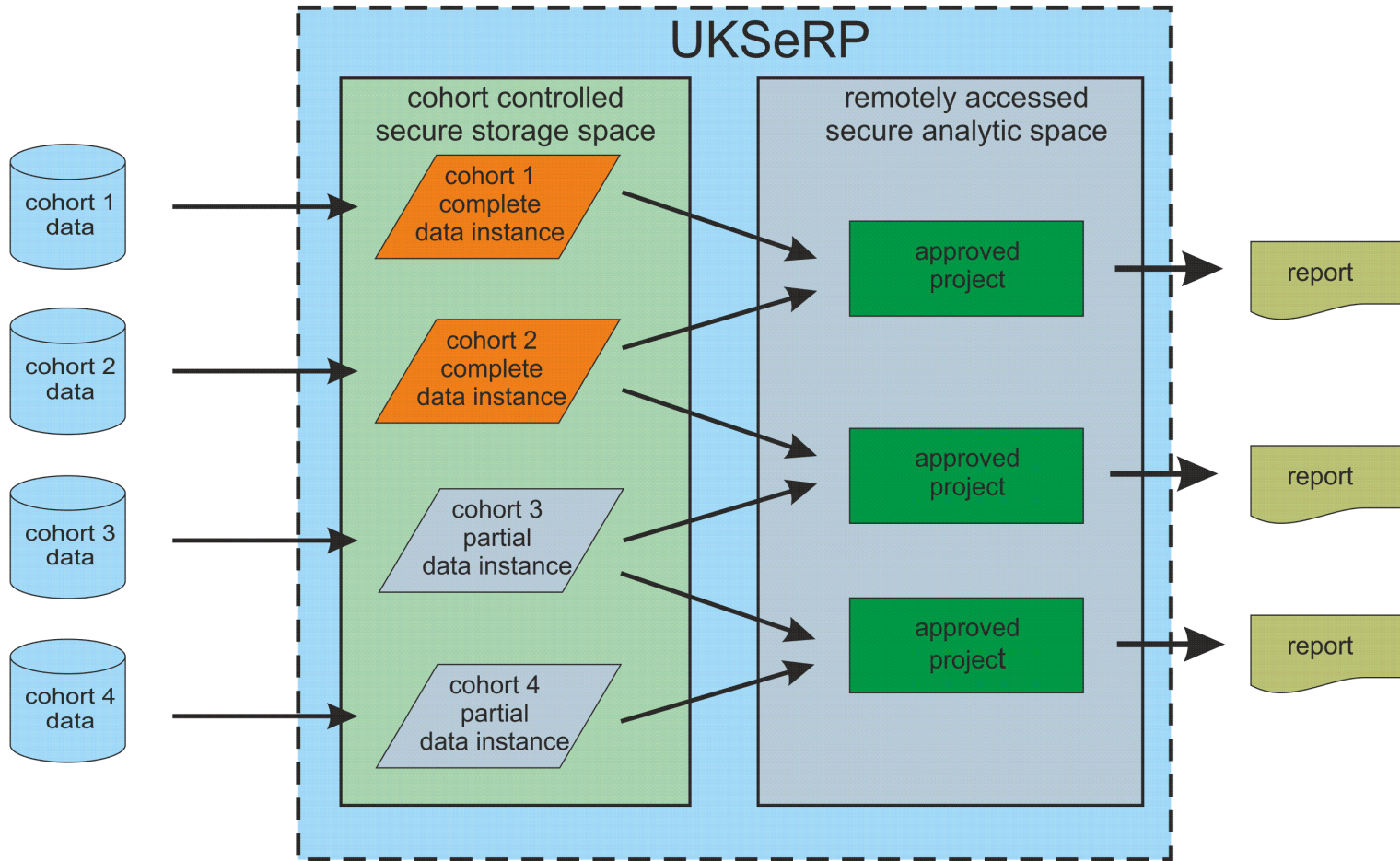
- **Identification of highly characterised participants**
 - Recruitment of stratified samples
 - Discovery studies, trials, in-silico experiments
- **Technology capacity building:**
 - Imaging, stem cells, bioinformatics:
 - Sharing best practice, niche expertise
 - Standardising protocols, streamlining governance
- **Rapid data access:**
 - Triangulation between multiple independent datasets
 - >30 cohorts: 2M participants



Integrated Infrastructure



Rapid Data Access

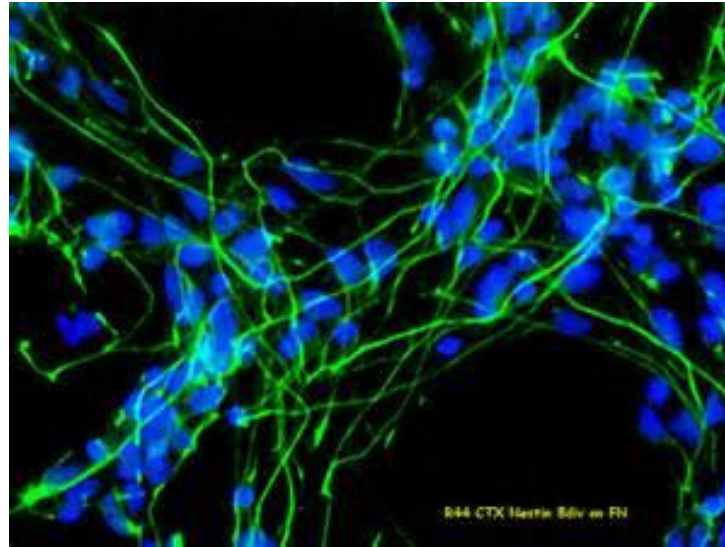


7 site PET/MR imaging network



- Step change in molecular imaging capability
- Lowering barriers to, and increasing the impact of, imaging studies
 - Economies of scale
 - Knowledge sharing and standardisation of protocols
 - Recruitment of highly characterised cohort participants

6 centre iPS Cells network



- Provide neuronal models of clinical phenotypes
- Preserve cell lines from cohorts
- Develop cellular basis of disease stratification
- Interrogate pathogenic pathways
- Early drug development studies

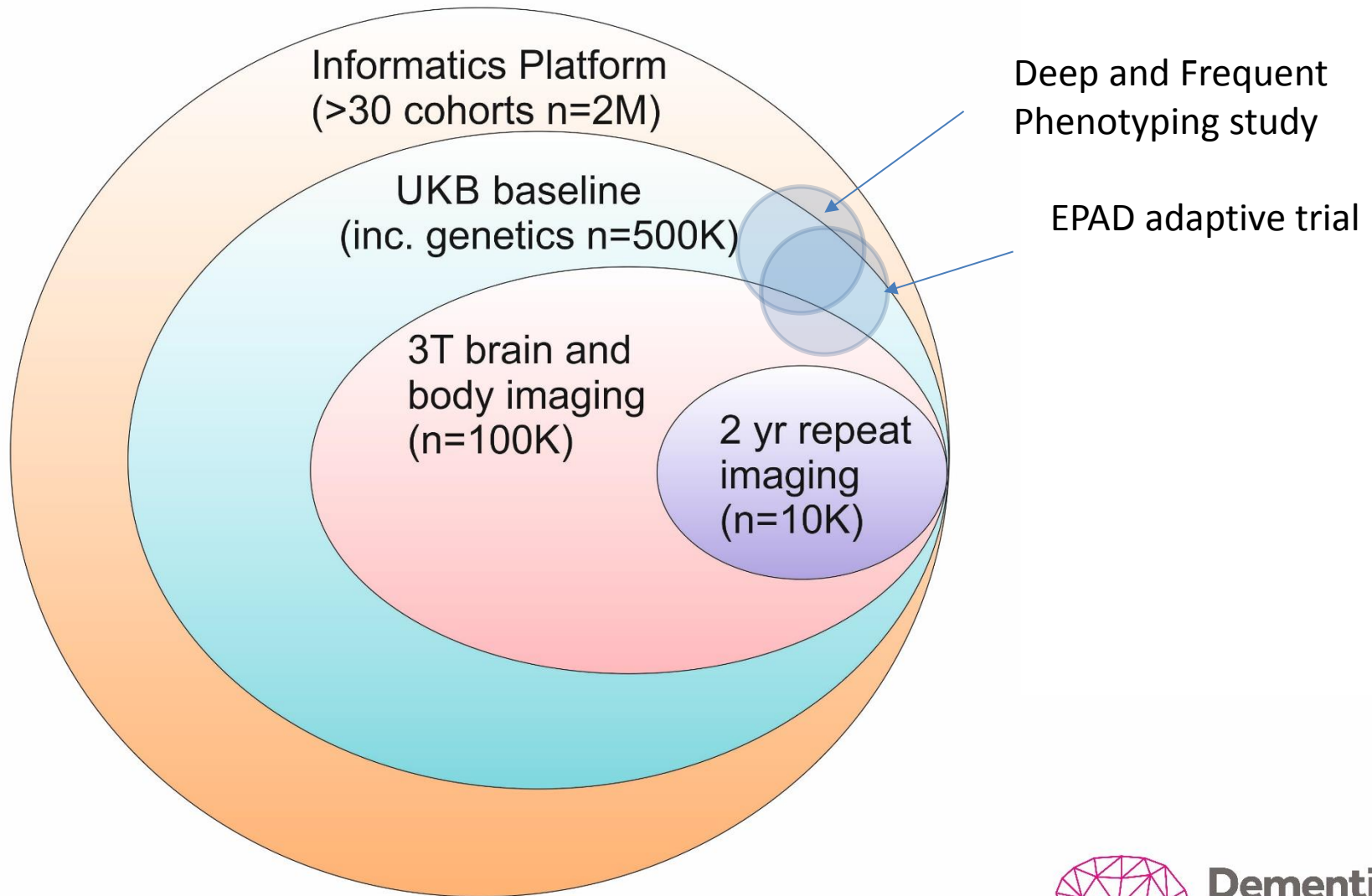


5 centre Informatics network

- >30 Cohorts (Swansea)
- Imaging and EHR linkage (Oxford)
- Wearable and other Devices (Manchester)
- Genomics (Cardiff)
- Tissue and Brain banking (Bristol)



Highly characterised trials recruitment



Risk stratification for clinical studies (and in silico experiments)

Sample	N
UKB base population	502,713
Episodic memory	498,053
Episodic memory >2 SD below mean	17,096
..... plus age 55 years+	12,447
..... plus APOE4 carrier (20%)	2,489

Opportunities: collaboration

- Data access
 - Register as a scientist through the website
 - Apply for data access through the portal
 - Portal goes live imminently
- Cross-initiative partnerships
 - Canada: CCNA, CLSA
 - USA: ADNI, GAAIN
 - Europe: MEMENTO, DZNE, ROADS



Araclon Biotech

GRIFOLS

SomaLogic

Imperial College
London



Swansea University
Prifysgol Abertawe



UNIVERSITY OF
CAMBRIDGE



Johnson & Johnson
INNOVATION



THE UNIVERSITY
of EDINBURGH

