



# The challenge, the vision and the value

Meaningful patient involvement in  
collaborative research projects

*Jan Geissler, Patvocates // LeukaNET // CML Advocates Network  
IMI impact on patient involvement, 7 Oct 2021*

# Why should academic researchers, industry and regulators involve patient advocates?

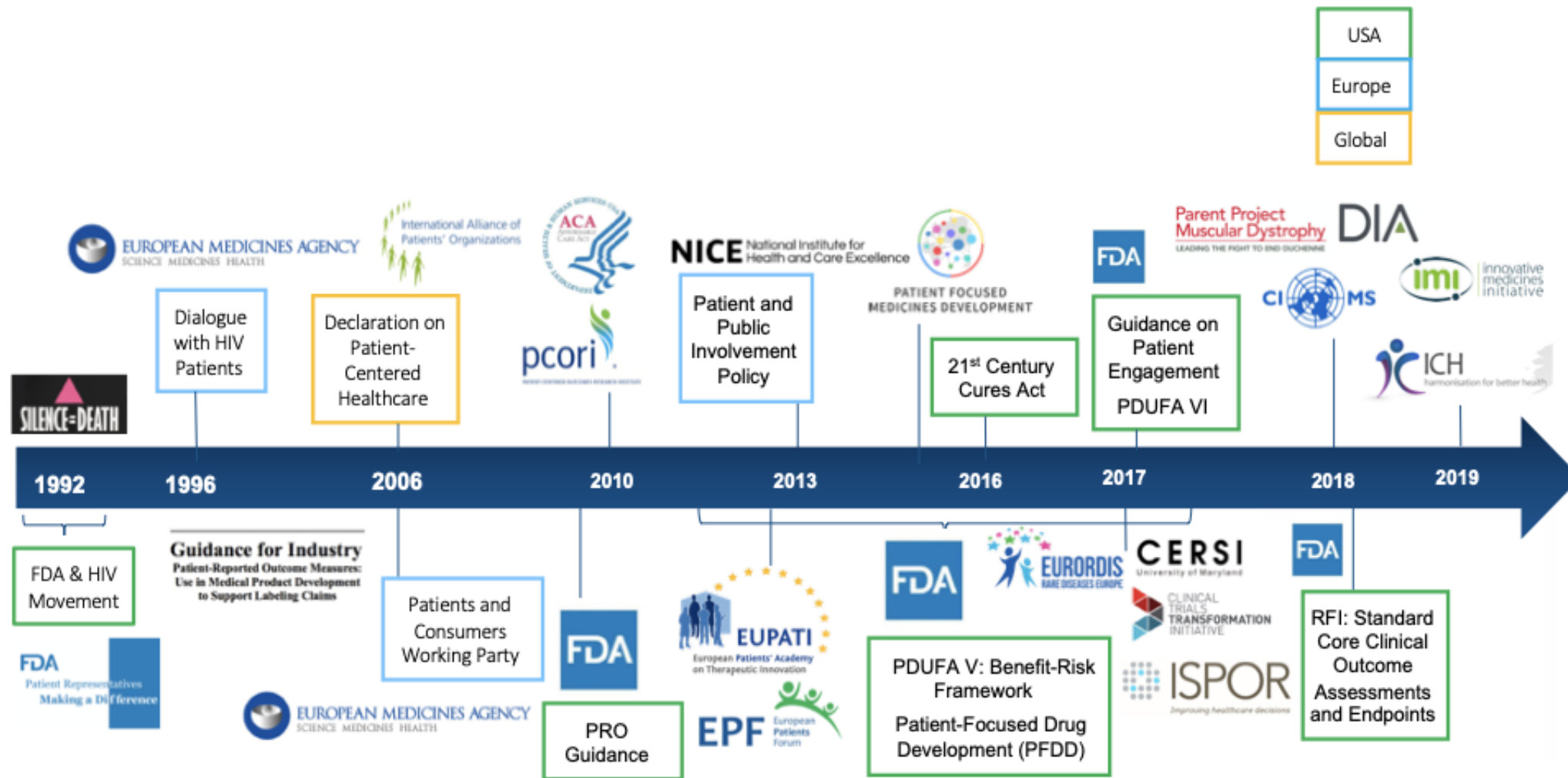


Move away from glossy statements on „patient centricity“ towards real involvement of patients in plans, actions, and outcomes

- Gather insights into the day-to-day reality of patients
- Understand „patients’ unmet need”, “patient preferences”, positive “benefit/risk” and „real value“ to patients
- Design better clinical trials, services and info resources, leading to wiser investment of limited resources and more meaningful data

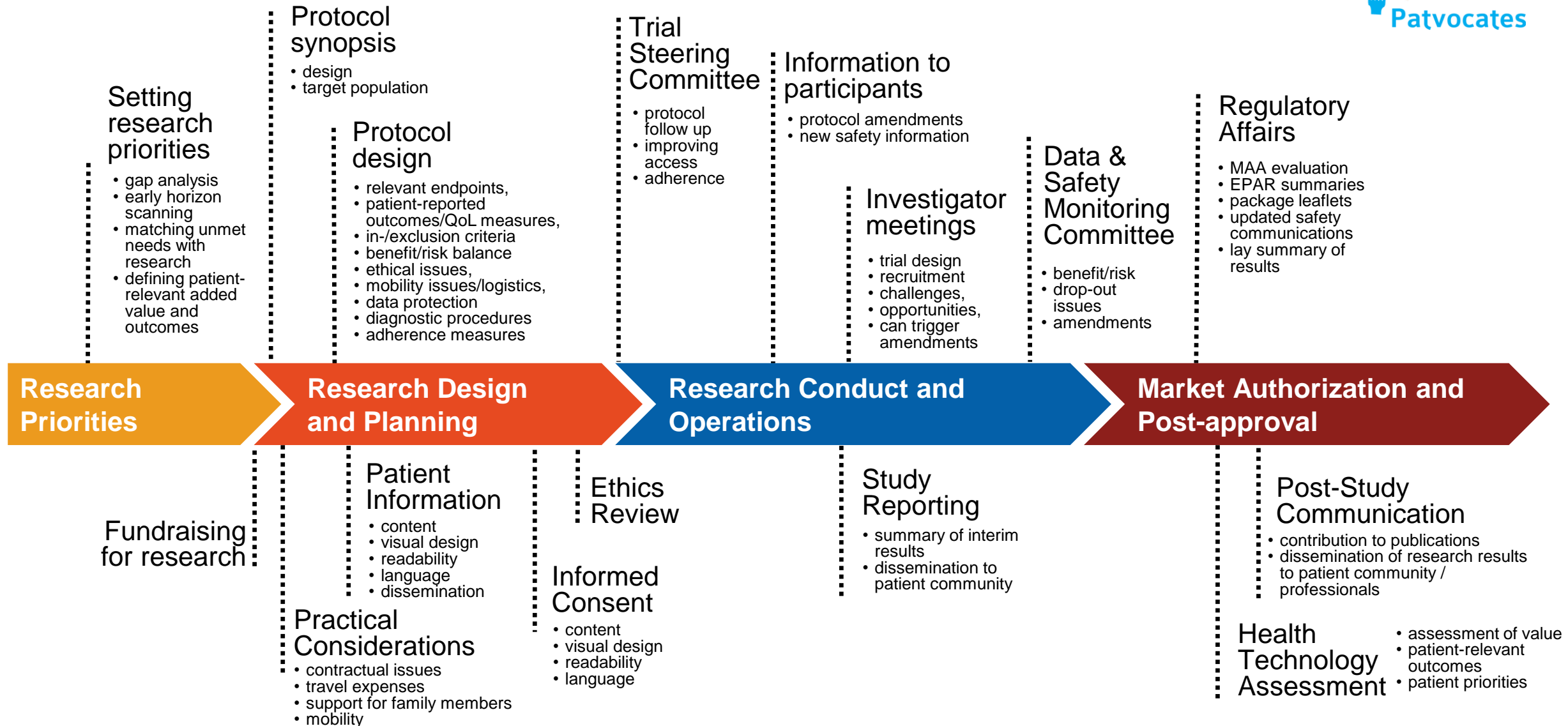
# Patient involvement in R&D is not a new fashion!

## Evolution from 1990s to strong maturity today



Source: PFMD / NHC (2020)

# Patient involvement in clinical development in practice



# 20% of 135 IMI projects had patient organisations in the consortium, 30% in patient advisory boards (60% by 2021)



<p>Risk – Benefit Appraisal: <b>PROTECT</b></p> <p>International Alliance of Patients' Organizations</p>	<p>Dementia: <b>EPAD</b></p> <ul style="list-style-type: none"> <li>Alzheimer Europ</li> </ul>	<p>Incorporating Real World data: <b>GetReal</b></p> <ul style="list-style-type: none"> <li>International Alliance of Patients' Organizations</li> </ul>	<p>Big data in Hematological Malignancies</p> <ul style="list-style-type: none"> <li>LeukaNET + Myeloma Patients Europe + MDS Alliance + Acute Leukemia Advocates Network + Childhood Cancer International + Lymphoma Coalition + CLL Advocates Network</li> </ul>
<p>Dementia: <b>PHARMA-COG</b></p> <ul style="list-style-type: none"> <li>Alzheimer Europe</li> <li>Greek Association of Alzheimer's Disease and Related Disorders:</li> </ul>	<p>Chronic Obstructive Pulmonary Disease (COPD): <b>PRO-Active</b></p> <ul style="list-style-type: none"> <li>Astma Fonds Longstichting</li> <li>British Lung Foundation</li> </ul>	<p>Neurodegenerative diseases: <b>AETIONOMY</b></p> <ul style="list-style-type: none"> <li>Alzheimer Europe</li> </ul>	<p>Big data in HM</p> <ul style="list-style-type: none"> <li>LeukaNET + Myeloma Patients Europe + MDS Alliance + Acute Leukemia Advocates Network + Childhood Cancer International + Lymphoma Coalition + CLL Advocates Network</li> <li>CML Advocats Network + MPN Advocates Network</li> </ul>
<p>Alzheimer's disease: <b>EMIF</b></p> <ul style="list-style-type: none"> <li>Alzheimer Europe</li> </ul>	<p>Autism spectrum disorders: <b>EU-AIMS</b></p> <ul style="list-style-type: none"> <li>Autism Speaks Inc.</li> </ul>	<p>Recognising adverse drug reactions: <b>WEB-RADR</b></p> <ul style="list-style-type: none"> <li>European Organisation for Rare Diseases</li> </ul>	
<p>Asthma: <b>U-BIOPRED</b></p> <ul style="list-style-type: none"> <li>European Lung Foundation</li> <li>Netherlands Asthma Foundation</li> <li>Asthma UK</li> <li>European Federation of Allergy and Asthma</li> <li>Lega Italiana Anti Fumo</li> </ul>	<p>European Patients' Academy on Therapeutic Innovation: <b>EUPATI</b></p> <ul style="list-style-type: none"> <li>European Patients Forum</li> <li>European Organisation for Rare Diseases</li> <li>European AIDS Treatment Group</li> <li>Irish Platform for Patients' Organisations, Science and Industry</li> <li>European Genetic Alliances Network</li> <li>Vereniging Samenwerkende Ouder - en Patiëntenorganisaties</li> <li>Genetic Alliance UK</li> </ul>	<p>Patient engagement in R&amp;D <b>PARADIGM</b></p> <ul style="list-style-type: none"> <li>European Patients Forum</li> <li>EURORDIS</li> <li>Alzheimer Europe</li> <li>European AIDS Treatment Group</li> </ul>	





# Patient engagement ecosystem has evolved: Trainings and tools



## Training for industry

- EUPATI Essentials
- EUPATI Fundamentals
- PFMD PE Training

## Training for patient advocates

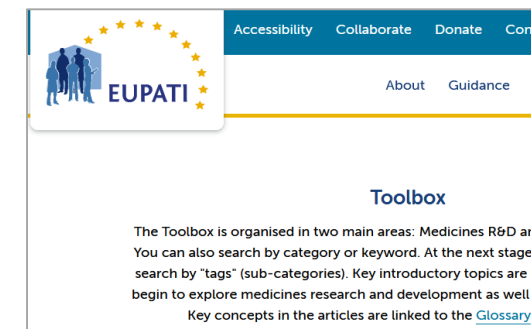
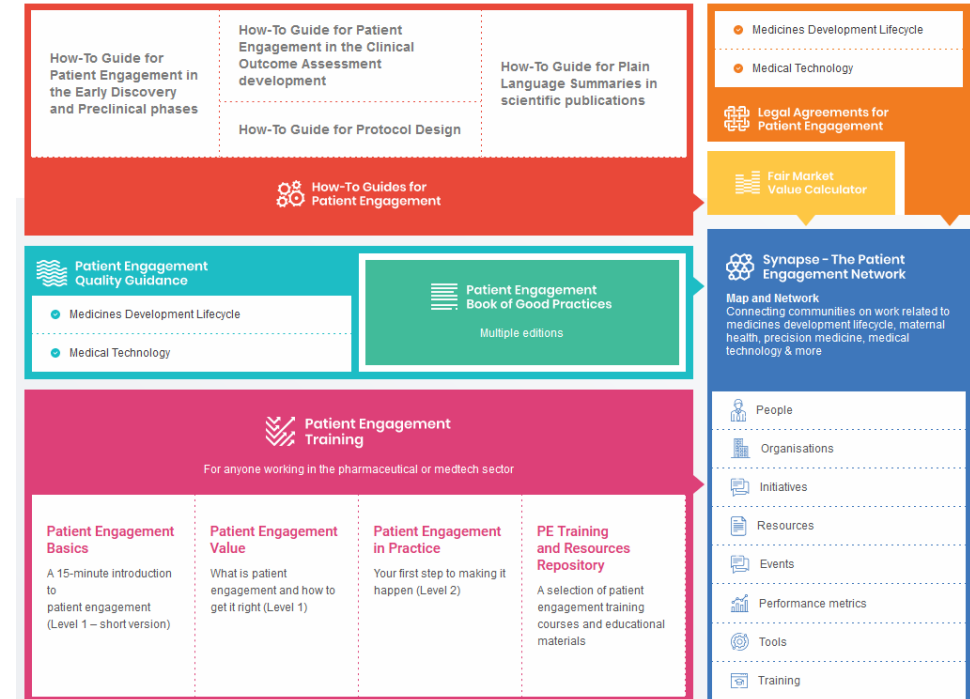
- EUPATI Patient Expert Training Course
- EUPATI Toolbox
- EUPATI National Platforms

## Guidance, Frameworks and tools for patient engagement

- 4 EUPATI Guidances on Patient Engagement
- PARADIGM frameworks
- PFMD how-to-guides

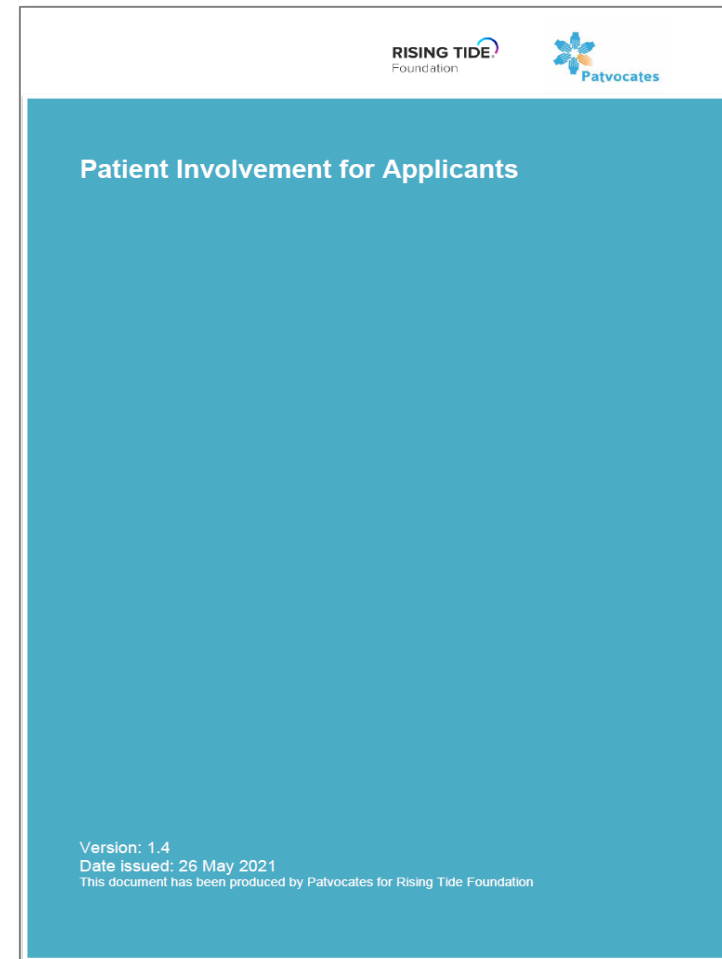
## Matchmaking & Best Practice Sharing

- PFMD Synapse



# Practical guidance on patient involvement in collaborative research projects

- Checklist when planning patient engagement
- Examples of potential contributions of patients
- Organisational models of patient engagement in research projects
- Identification of the right patient organisation/patient advocates and resourcing the contributions
- Patient involvement plans
- Preparing the patient community for their contribution in the post-application, pre-launch phase



# Involvement models for collaborative research projects



Engagement model	Patient organization's / patient expert's role	Impact
<b>Project coordinator, chair or co-chair</b>	Leads and coordinates the research project	Very high
<b>Steering committee member</b>	Member of the governance board of the research project	Very high
<b>Work package leader</b>	Coordinates a specific work package in the project	High
<b>Research project member</b>	Full member of the research teams	Medium
<b>Patient involvement hub</b>	Full project member, coordinating all contributions from the wider patient community	High
<b>Associated project partner</b>	Partnership agreement with the research project (but usually no funding)	Small
<b>Advisor / advisory board member</b>	Providing advice in ethics committee, scientific/project advisory board, data safety monitoring board, but no governance or leadership role	Small





### The first and largest Public-Private Partnership for Big Data in Hematology

**14** key targeted blood cancers



Patient input into HARMONY Core Outcome Sets, HARMONY Delphi Surveys, HARMONY Research proposals

HARMONY Patient Organisations Masterclass, HARMONY Communications about Big Data in Blood Cancer and about project results to patients and general audience

HARMONY Ethical Framework, De-identification Mechanisms

**Patient input into core HARMONY tasks:**

- Stakeholder Forum
- Clinical Value Framework
- Access Evidence Framework



# All essential ingredients for patient engagement for more inclusiveness are here

- Shared purpose and **collaborative spirit**
- **Political and institutional will**
- Engagement **frameworks**
- **Capacity** to engage  
e.g. by patient organisations,  
companies and institutions





A large, leafy tree stands in a vibrant green field under a clear blue sky with a few white clouds. Two horizontal red lines are drawn across the image to indicate fruit height levels. The upper line is positioned near the top of the tree's canopy, and the lower line is positioned near the base of the tree's branches.

**High Hanging Fruit**

**Low Hanging Fruit**

**All essential ingredients are here.  
Let's engage!**

**Jan Geissler**  
jan@patvocates.net

