

IMI for Europe and Its Citizens

The IMI Joint Undertaking is aiming to make Europe more attractive for biopharmaceutical research and development investments and to boost the competitiveness of European life sciences. Facing challenges, there is a potential to:

- Modernise the research and development of medicines
- Expand European expertise and skills in new technologies
- Anchor research and development jobs in Europe and reverse brain drain
- Enhance Europe's economy by strengthening the competitive position of smaller companies, enabling them to collaborate with a multitude of stakeholders
- Craft a pan-European road map for collaboration between the industrial sector and academia at the highest possible level
- Speed up the discovery and development of safer and more effective treatments for patients
- Better inform patients about medicines R&D and the complexity of new treatment development
- Implementing high-quality standardized training to foster competence

IMI Education and Training

To date (2012), five IMI Education and Training Programmes have been established to provide excellence in education and training, including for patient organisations and patients at large. The overall objectives are:

- To assess existing and emerging education, training and information needs in academia, pharmaceutical industry, competent authorities and patient organisations, and to help filling them at relevant levels in certificate, diploma, master, PhD courses and other programmes.
- To arrive at strategies, develop concepts and produce material including e-products, which is easily accessible to students, researchers and professionals all over Europe. In this, reviewing current and agreeing on new accreditation, certification and quality criteria are important for mutual recognition, acceptance and implementation across academic institutions.
- To build an online IMI Education and Training course catalogue and portal to better take advantage of existing and new quality-assessed courses, programmes, methods and e-learning in continuing professional development (CPD) on medicines research, development, processing and usage.

IMI Education and Training Partnership

Currently 90 partners are collaborating in the IMI Education and Training projects:

- 19 Industry (EFPIA) Partners
- 55 Public (mainly university) Partners
- 4 Regulatory Partners
- 4 Patients' Organisation Partners
- 7 Learned Society Partners

Additional Information

For more information about any of the projects, plans and achievements to date, see their websites above and/or contact the project leadership as advised on the websites. Alternatively, access the IMI Website www.imi.europa.eu.



IMI Education and Training Programmes

Revolutionising education and training to deliver more effective and safe new medicines for patients

www.imi.europa.eu



IMI Background

The Innovative Medicines Initiative (IMI) is a unique and large-scale public-private partnership between the European Commission and the European Federation of Pharmaceutical Industries and Associations (EFPIA).

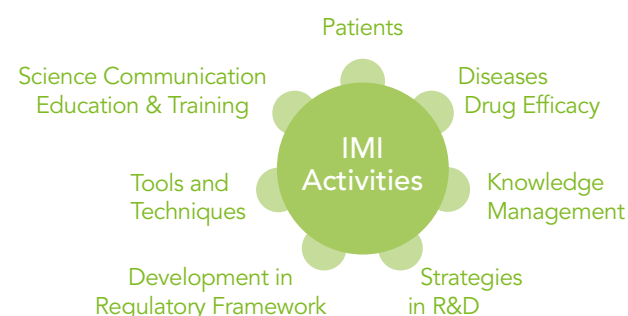
IMI runs a € 2 billion programme (through 2017 under the current framework) aiming to speed up the discovery and development of medicines. To boost the biopharmaceutical sector in Europe, IMI is funding collaborative research, and supports a better integration of scientific education and training, as well as patient information.

European leadership in innovative biomedical research requires highly skilled, experienced researchers in many different disciplines. The IMI Education and Training priorities are aiming at substantially improving expertise on biomedical science, tools and technologies (such as biomarkers, imaging techniques, knowledge management platforms ...). This will enable faster and more efficient development of safer and more effective medicines for patients.

The research consortia participating in IMI projects include universities and other research organisations, hospitals, patient organisations, regulators, public authorities, large pharmaceutical companies, and small and medium-sized enterprises (SMEs).

IMI receives € 1 billion funding from the European Commission's Seventh Framework Programme for Research. The EFPIA member companies match this amount with in-kind contributions (consisting of research-related activities and resources).

IMI supports projects in the following non- or pre-competitive areas:



Based on these needs, a European Strategic Research Agenda was developed under the lead of industry involving all relevant stakeholder groups, i.e. academia; biopharmaceutical companies and small and medium-sized enterprises (SMEs); healthcare providers and clinical centres; regulators, learned societies, and patients' organisations.

IMI Education and Training Projects

The following five projects are part of IMI's research training platform. They are linked together by novel educational programmes and quality standards.

IMI EMTRAIN www.emtrain.eu

The European Medicines Research Training Network (EMTRAIN) is establishing a sustainable, pan-European platform for education and training covering the whole life-cycle of medicines research, from basic science through clinical development to pharmacovigilance. This is achieved by integrating the strengths and competencies of the ESFRI BMS Infrastructures (European Strategy Forum on Research Infrastructures), the EFPIA companies, the current and future IMI E&T programmes as well as other scientific projects.

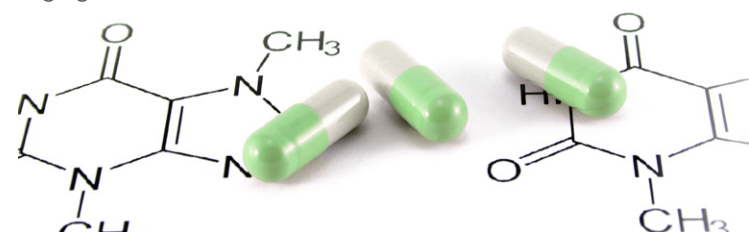
Public-Private PhD Initiative: EMTRAIN seeks to develop a cadre of PhD students across the EU with a greater awareness of the pharmaceutical industry and of the specific issues and challenges that need to be addressed in the discovery and development of new medicines and vaccines.

The on-course® portal www.on-course.eu: on-course® is the most comprehensive and sustainable biomedical and medicines research and development postgraduate course portal in Europe. on-course® offers fast access, easy navigation of all the important course information summarised in a single page for students, professionals and scientists to find the right high-quality courses for biomedical and medicines research and development.



IMI and Continuing Professional Development: IMI Education and Training provides keys to optimise career development, both today and for the future. It facilitates conscious updating of professional knowledge and the improvement of professional competence throughout an individual's working life building on a commitment to being professional, keeping up to date and continuously seeking to improve.

The LifeTrain: A broad group of European professional and scientific bodies and the IMI Education and Training projects have together started to develop LifeTrain, a common European Framework for Continuous Professional Development (CPD), led by EMTRAIN. This enhanced guidance will support scientists working in all aspects of medicines' discovery, development, processing and usage to maintain their professional competence in a rapidly changing environment.



IMI Eu2P www.eu2p.org

The European Programme in Pharmacovigilance and Pharmacoepidemiology (Eu2P) addresses training needs, for both life science specialists and non-specialists. It is developed by a unique faculty of highly qualified professionals in these disciplines, who have combined experience from academia, industry and regulatory agencies. The curriculum offers a range of qualification levels (certificate, master and PhD) and allows part or full time study by those in employment as well as graduate students. Eu2P provides a high level of course flexibility by using innovative and interactive e-learning tools.

IMI PharmaTrain www.pharmatrain.eu

PharmaTrain is implementing Europe-wide reliable standards for high-quality postgraduate education and training in Medicines Development. Training Centres which offer Diploma Courses, Master Programmes and CPD Modules under the PharmaTrain brand share the high PharmaTrain standards and undergo quality assessments. They are awarded as PharmaTrain Centre Recognition or, if they offer other CPD modules in addition to the standardised programmes, they are called a PharmaTrain Centre of Excellence. If you are interested in the integrated process of discovery, development, regulation and marketing of medicines, PharmaTrain branded training is offering you new opportunities to widen your horizon and competencies and to drive your career. Alternatively you can choose à la carte from some 250 modules for personalised training.

IMI SafeSciMET www.safescimet.eu

European Modular Education and Training Programme in Safety Sciences for Medicines (SafeSciMET) develops and delivers an education and training programme of 20 courses across Europe. Courses focus on drug safety and emphasise holistic, integrative and translational aspects (from pre-clinical to clinical phases), which are lacking largely in today's educational programmes. As such, SafeSciMET contributes to a new "breed" of drug safety scientists, also embracing new technologies to enhance innovative approaches to drug discovery and development. The first course cycle was completed 2010-2012, and the second cycle will be run 2012-2014.

IMI EUPATI www.patientsacademy.eu

The European Patients' Academy on Therapeutic Innovation (EUPATI) will provide scientifically reliable, objective, comprehensive information to patients on pharmaceutical R&D. It will increase the capacity of well-informed patients to be effective advocates and advisors, e.g. in clinical trials for better medicines, with regulatory authorities and in ethics committees. The consortium is led by the European Patients' Forum and comprising a unique combination of pan-European patient organisations, academic and not-for profit organisations expert in patient and public engagement, and EFPIA member companies. EUPATI will provide the tools and also acknowledge meaningful involvement and empowerment in pharmaceutical innovation, safety of medicines and access to treatments.