



European Medicines
Research Training Network



Innovative Medicines Initiative



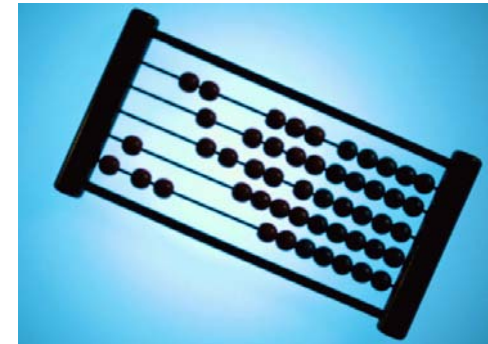
efpia



What patients need What Europe needs



The Education and Training projects will enhance Europe's biomedical education landscape to promote:



- Innovation
- Europe's global leadership in medicines research
- Development of new, safer more effective medicines

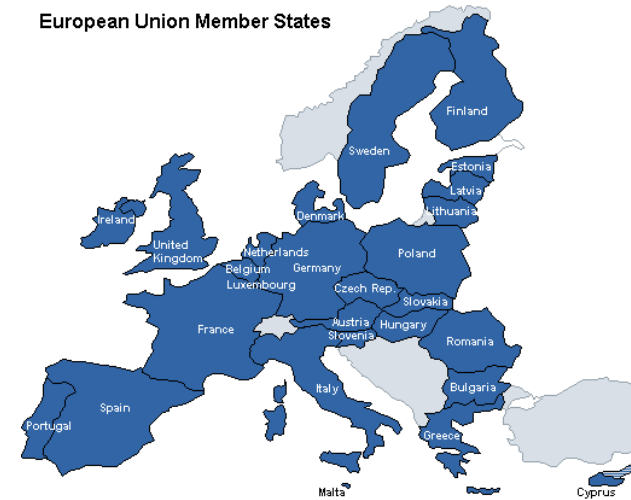


What we will do about it



EMTRAIN will establish a **sustainable, pan-European platform** for education and training covering the **whole life-cycle of medicines research**, from basic science through clinical development to pharmacovigilance

European Union Member States

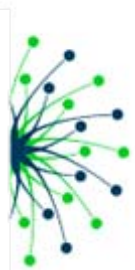


How will we do it?



By integrating the strengths and competencies of the:

- European Biological & Medical Sciences (BMS) Infrastructures
- EFPIA companies
- IMI E&T Projects (members of the Strategic Coordination Board)
- IMI Scientific Topics (members of the Network Committee) and
- External stakeholders (members of the External Advisory Board).



Innovative approach



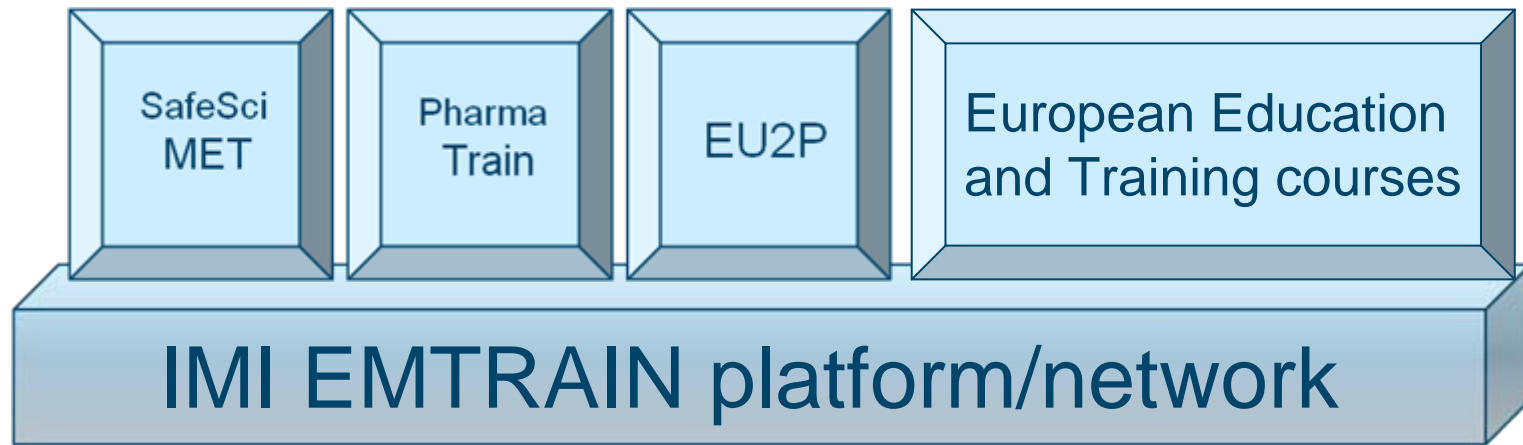
- Unique, public private partnership
- Pan-European platform
- Building on previous success
- Empowering people
 - Course catalogue
 - Quality evaluated
 - Build individual competency portfolios
- Continuous review



Cross E&T Collaboration



- Course catalogue
- Tools & processes (e.g. Accreditation)
- Knowledge sharing
- Guidelines
- Communications (e.g. Students' Office)



Expected outcome



Pan-European platform

- Easier access to quality courses
- Links to national governments, universities, professional bodies & industry



State-of-the-art course catalogue

- Tailored to individual needs
- Incorporating IMI quality criteria
- Continuous feedback from users & improvements



New breed of “drug developers”

- Awareness of translational science
- Greater collaboration - open innovation
- Life-long learning

Expected benefit to patients

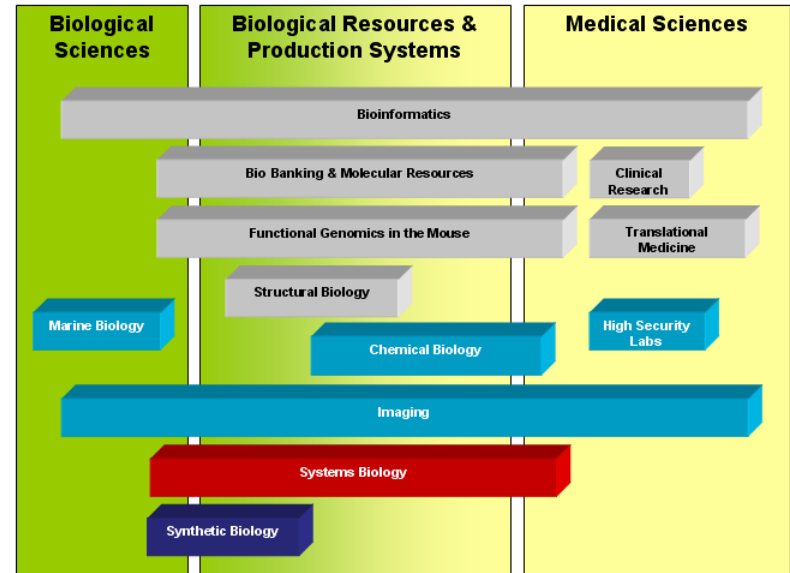


Added value of the consortium



- Biobanking and Biomolecular Resources Research Infrastructure (BBMRI)
- European Advanced Translational Research Infrastructure for Medicine (EATRIS)
- European Clinical Research Infrastructures Network (ECRIN)
- Upgrade of European Bioinformatics Infrastructure (EBI-STRUCT-EBI)
- European Infrastructure for phenotyping and archiving of model mammalian genomes (INTEGRATION)
- Integrated Structural Biology Infrastructure (ELIXIR)
- 16 EFPIA companies (10 of the top 20 companies in the world)

More than 150 institutions



Achievements so far



- Established open-source project management system
- Pan-European expansion
 - Hungary & Poland included
- Defined specification for course catalogue and chosen vendor
- Linked to Orpheus, Marie-Curie, EATRIS and industry for PhD programme
- Communication platform established
 - Web-site, E&T slide set, pamphlets, virtual student office
 - Cross-IMI E&T task force established
 - Orpheus, Stockholm Clinical Trials meeting, IMI Stakeholder meeting, WorldPharma 2010
- Interactions with Bologna experts, National Ministries - Health & Education and Professional Bodies



On-line Project Management Tool



The screenshot displays the EMTRAIN web application interface. The browser title is "European Medicines Research and Training Net...". The navigation menu includes: EMTRAIN Home, Overview, Workpackages, Deliverables, Calendar, Documents, Messages, Users, and Config. The main content area is titled "EMTRAIN - Overall / Documents". It features a search bar and a toolbar with "New Folder", "New File", "New note", "Note", "Delete", and "Config". A left sidebar shows a tree view of folders: "Approved Deliverables", "EMTRAIN FPP", "Meeting Minutes", "Other Documents", "Periodic IMI reports", and "Templates". A table lists documents with columns for Title, Description, Date, Author, and ID.

#	Title	Description	Date	Author	ID
1	Meeting Minutes		02/22/2010	Administrator	45
2	Approved Deliverables		02/22/2010	Administrator	46
3	Periodic IMI reports		02/22/2010	Administrator	47
4	Other Documents		02/22/2010	Administrator	48
5	EMTRAIN FPP		02/26/2010	Christa Janko	51
6	Templates		03/05/2010	Christa Janko	76



User Registration, Login and Dashboard



The image displays three screenshots of the MyEMTRAIN website interface. The top screenshot shows the login page with fields for email address and password, and links for 'Not a member yet? Join now', 'Remember me? (Privacy)', and 'Forgotten password?'. The middle screenshot shows the registration page with a form for account details, including first and last name, email address, password, and country of nationality. The bottom screenshot shows the user dashboard for Sarah, featuring sections for 'My Courses' (Pharmacology, Scotland; Medicine, York; Medicine, Brussels), 'My Sectors' (Pharmaceuticals, Medicine), 'Latest forum posts' (Government Economic Service, Training at work...!? "sigh"), 'My Feeds' (Latest Course RSS, EMTRAIN Newsletter, PHARMA News, Profile RSS, Notts University), and a 'Welcome Back to MyEMTRAIN!' message with links to manage profile, applications, preferences, contacts, and feeds.

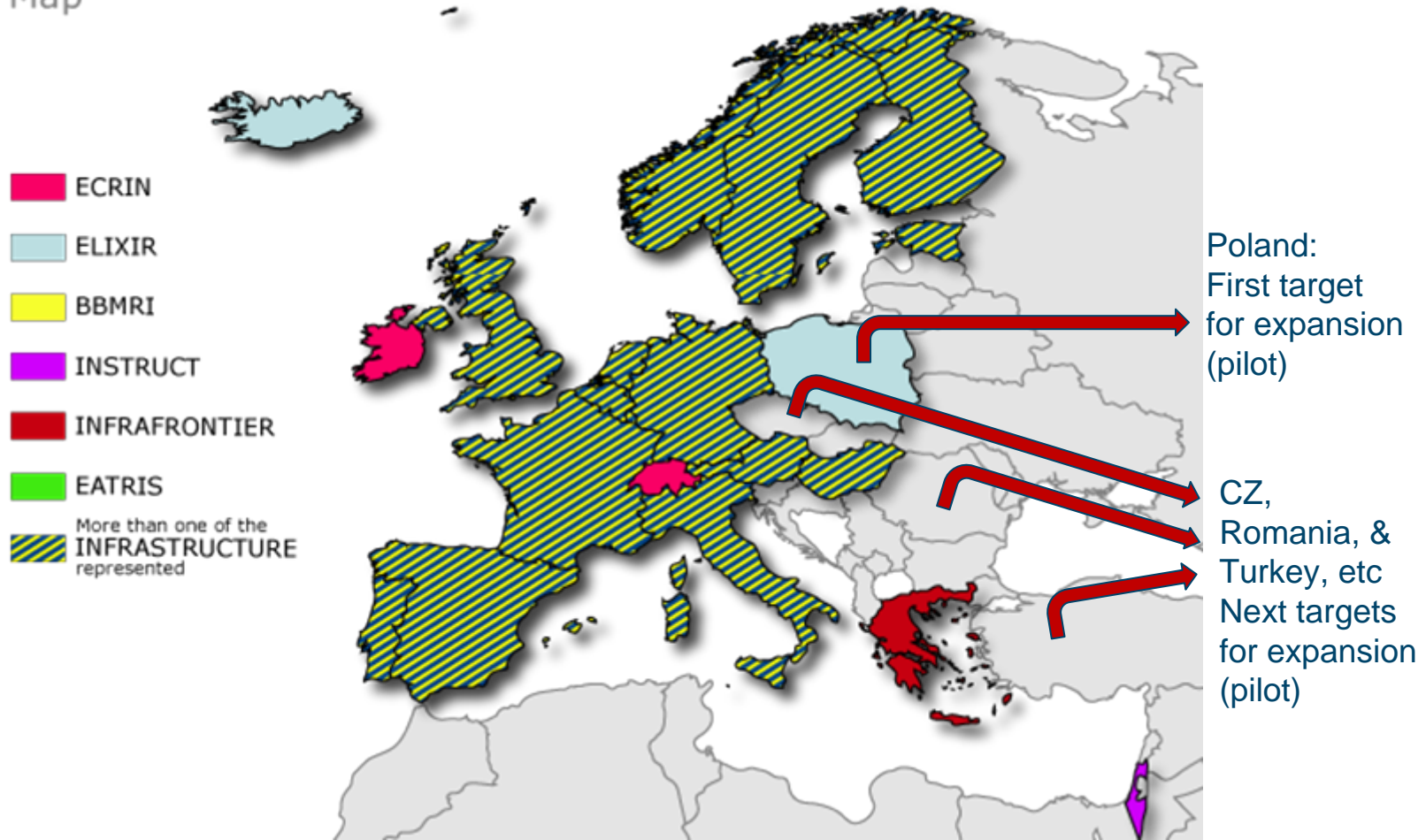
- ✓ User registration and login process
- ✓ Account management
- ✓ Personalised search
- ✓ Administer newsletter / feeds
- ✓ User administration and reporting



EMTRAIN pan-European extension



Map





European Medicines Research and Training Network

[Login](#)[Contact](#)[Sitemap](#)

- [Home](#)

- [About EMTRAIN](#)

- [IMI E&T Programmes](#)

- [Partners](#)

- [Work Packages](#)

- [News](#)

- [Meeting Calendar](#)

EMTRAIN will establish a sustainable, pan-European platform for education and training (E&T) covering the whole life-cycle of medicines research, from basic science through clinical development to pharmacovigilance. This will be achieved by integrating the strengths and competencies of the ESFRI BMS Infrastructures, the EFPIA companies, the current and future IMI E&T programmes as well as other scientific projects.

EMTRAIN is funded by the Innovative Medicines Initiative (IMI).



EMTRAIN travels Poland

EMTRAIN discusses expansion to Poland. The connection of partner universities to the European Clinical Research Infrastructures Network (ECRIN) in Warsaw will also have implications for EMTRAIN.

[Read more...](#)

EMTRAIN participates in 5th ORPHEUS Conference

EMTRAIN will be represented by 2 key-note speakers at the 5th ORPHEUS Conference (Organisation for PhD Education in Biomedicine and Health Sciences in the European System), organized by the Medical University of



Communication materials



MISSION STATEMENT

EMTRAIN will establish a sustainable, pan-European platform for education and training covering the whole life-cycle of medicines research, from basic science through clinical development to pharmaco-vigilance.

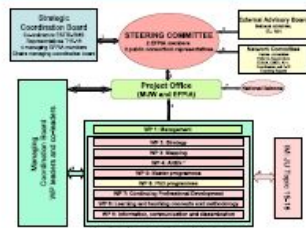
E&T – THE FOUNDATION

E&T is the foundation for the entire value chain:



This will be achieved by integrating the strengths and competencies of the ESFRI BMS Infrastructures, the EFPIA companies, the current and future IMI E&T Projects (as members of the EMTRAIN Strategic Coordination Board), the current and future IMI Scientific Topics (as members of the EMTRAIN Network Committee) and external stakeholders (as members of the EMTRAIN External Advisory Board).

STRUCTURE AND INPUTS



The EMTRAIN project, one of the four current IMI JU funded Education & Training Programmes, is coordinated by AstraZeneca. The Managing Entity is run by the Medical University of Vienna.

EMTRAIN's KEY OBJECTIVES

Complementary to the content producing IMI JU Education & Training Programmes (www.safesciemet.eu, www.pharmatrain.eu, www.eu2p.eu) EMTRAIN aims at achieving more general objectives:

- Collection, evaluation and dissemination of information on Master Programmes, PhD Programmes and Continuing Professional Development Programmes in medicines research in the form of a pan-European online course catalogue
- Initial and continuing gap analyses regarding missing programmes, missing topics, lacking mobility of students and teachers, lacking geographic needs, new education methodologies and others
- Development of a toolkit of teaching concepts and methodologies (e-learning, distant learning, etc.)
- Development of new strategies and concepts for joint PhD programmes carried out in partnership between academia and industry
- Establishment of an online Students Office to provide advice and guidance to students as well as to allow for a broad exchange among students
- Promoting the expansion of IMI JU education & training initiative to new countries
- Assuring continuing information of all stakeholders: universities, researchers, industry, regulators, relevant governmental and non-governmental bodies, professional associations, patient organizations, general public.

PAN-EUROPEAN EXPANSION

EMTRAIN will implement creative strategies for pan-European expansion to all 27 EU Member States as well as associated countries. EMTRAIN will follow extension plans of the ESFRI BMS networks to broaden the IMI network which will be aimed at throughout the entire duration of the EMTRAIN project.

EMTRAIN PARTNERS & COUNTRIES



- ECRIN - European Clinical Research Infrastructures Network (www.ecrin.org)
- ELIXIR - European Life Sciences Infrastructure for Biological Information (www.elixir-europe.org)
- BBMRI - Biobanking and Biomolecular Resources Research Infrastructure (www.bbMRI.eu)
- INSTRUCT - Integrated Structural Biology Infrastructure for Europe (www.instruct-fp7.eu)
- INFRAFRONTIER - European Infrastructure for Phenotyping and Archiving of Model Mammalian Genomes (www.infrafrontier.eu)
- EATRIS - European Advanced Translational Research Infrastructure in Medicine (www.eatris.eu)



Summary of project



- Official Start date:
1st October 2009 (approved in February 2010)
- First Annual Report:
Due on 30th November 2010
- Duration:
7 years
- Overall Project Budget:
EURO ~ 7.7 million
- First Pre-payment:
March 2010 (EURO 600,000)



28 Project Partners



Public Partners:

Members of the ESFRI BMS Infrastructures EATRIS, ECRIN, ELIXIR, BBMRI, INFRAFRONTIER & INSTRUMENT

- Medizinische Universität Wien
- Karolinska Institutet
- Karolinska University Hospital
- University of Manchester
- Institut National de la Santé et de la Recherche Médicale
- European Molecular Biology Laboratory's European Bioinformatics Institute
- Helmholtz Zentrum für Infektionsforschung
- Medical University Graz
- Centre de Recherche en Biologie et Médecine
- Helmholtz München Gesundheit Umwelt
- University of Oxford
- Medical Research Council Hungary

EFPIA Partners:

- Astra Zeneca
- Genzyme Europe BV
- Novartis Pharma AG
- Bayer Schering Pharma AG
- Pfizer Ltd.
- F. Hoffmann-La Roche AG
- GlaxoSmithKline R&D Ltd.
- UCB Pharma SA Belgium
- Novo Nordisk A/S
- Sanofi-Aventis R&D
- Boehringer-Ingelheim International GmbH
- JANSSEN Pharmaceutica NV
- ORION Pharma
- Almirall
- H. Lundbeck A/S
- Esteve



Further information



www.imi.europa.eu





Education & Training

European Medicines Research Training Network

(EMTRAIN – www.emtrain.eu)

Coordinator: Astra Zeneca

Managing Entity: Medizinische Universität Wien

Contacts:

mike.hardman [AT] astrazeneca.com, +44 1625 519566

michael.wolzt [AT] meduniwien.ac.at, +43 1 40400 2980

