



# Introduction to IMI

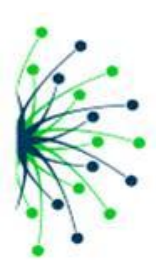
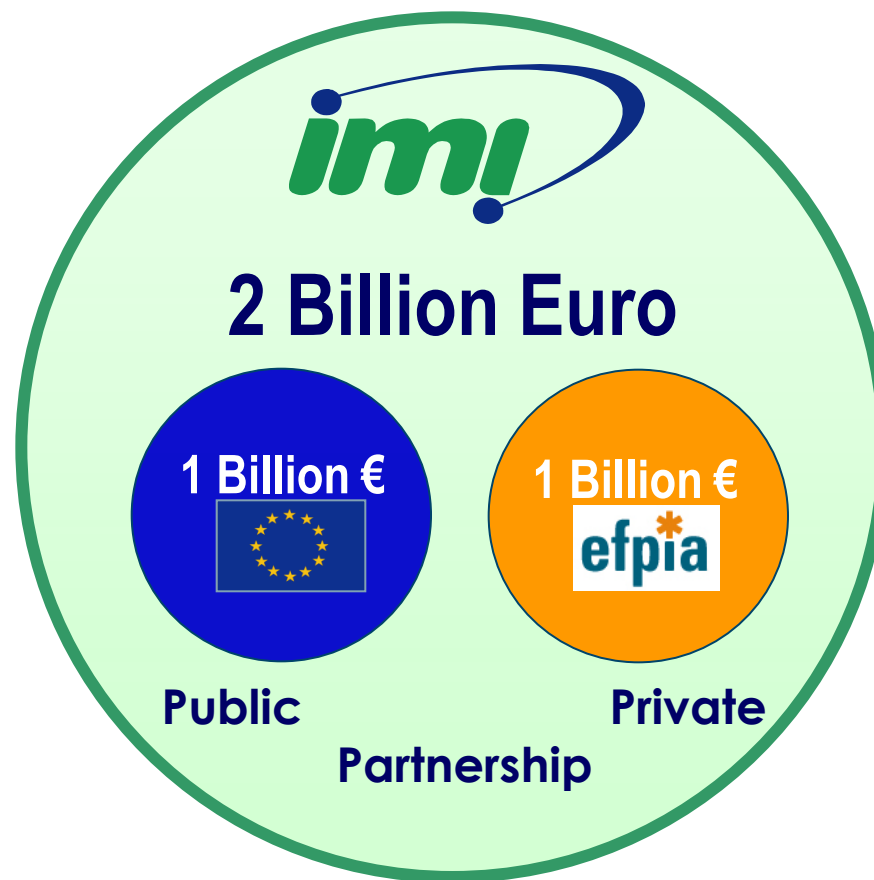
**Michel Goldman, MD, PhD**

*Executive Director*

# Innovative Medicines Initiative:

*Joining forces in the healthcare sector*

---



# Key Concepts

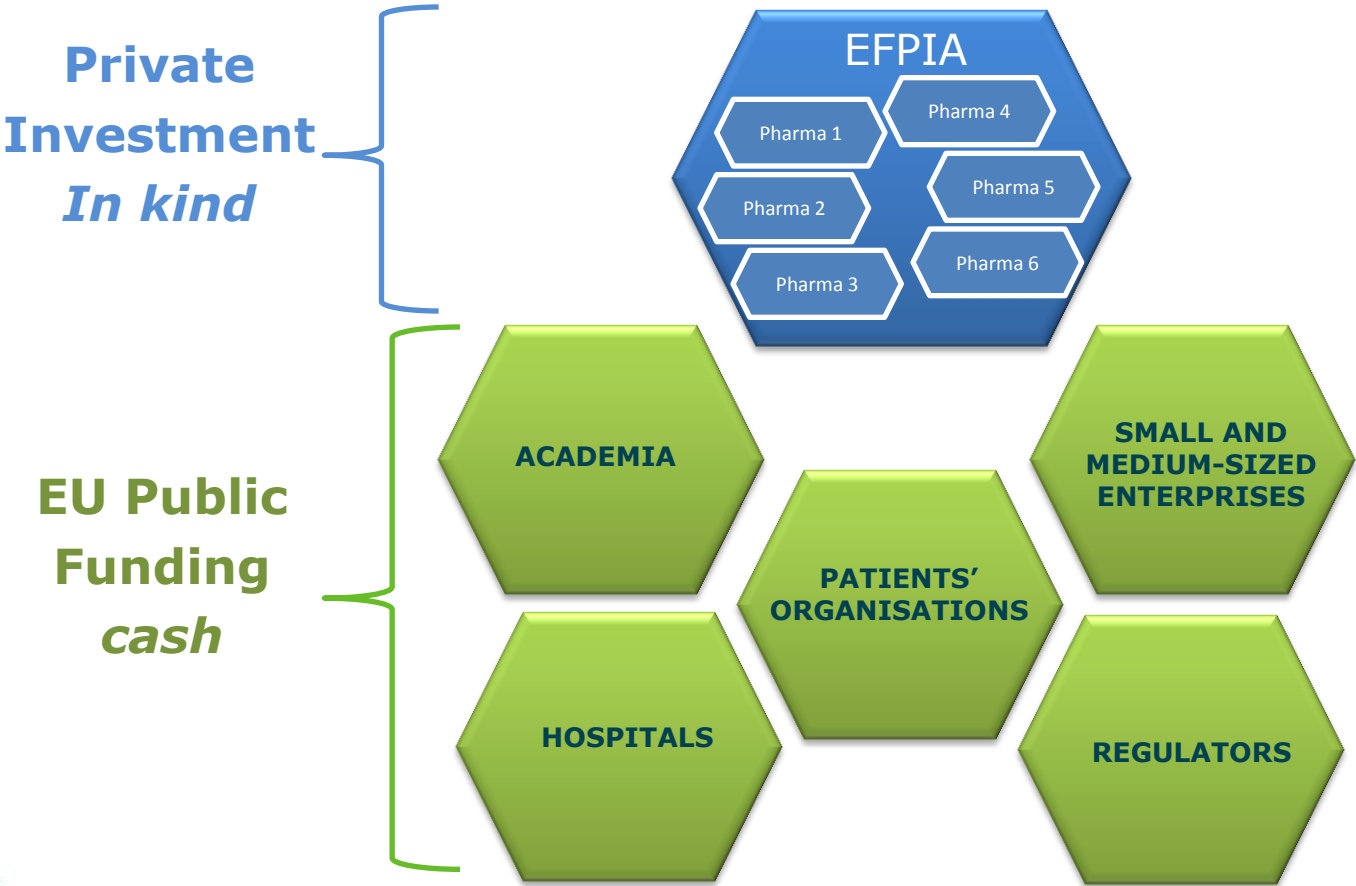
---



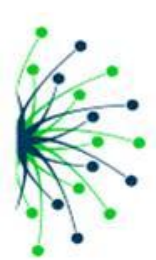
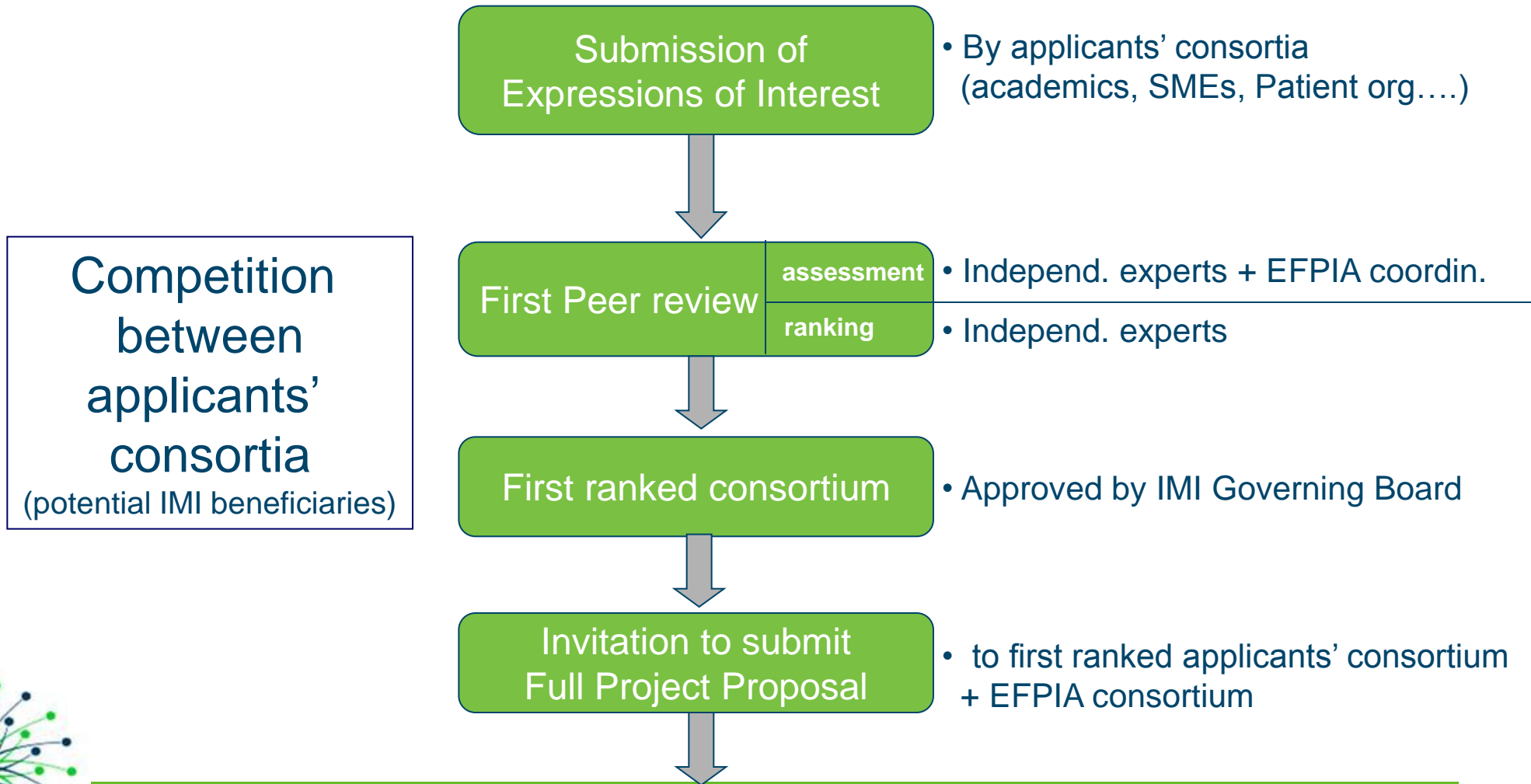
- **Non-competitive research for EFPIA companies**
- **Competitive calls for IMI beneficiaries**
- **Open collaboration in final consortia**



# A typical IMI consortium



# Building an IMI Project



# Why apply ?

---



- **Looking for additional funding**
- **Interested in patient-centric biomedical/pharmaceutical research**
- **Interested in collaborating with large pharmaceutical companies**



# Overview of IMI projects



	Call 1	Call 2	Call 3	Call 4 (forecast)	TOTAL (forecast)
No. of projects	15	8	7	7	37
No. of EFPIA teams	160	66	54	61	341
No. of academic teams	194	105	101	108	508
No. of SME teams*	26	22	14	30	92
No. of patients' organisations	10	1	6	0	17
No. of regulatory agencies	7	0	2	1	10
No. of other partners	3	0	3	4	10
IMI JU contribution (€ millions)	109,6	80,7	111,8	93,6	395,7
EFPIA in-kind contribution (€ millions)	132,6	65,9	70,8	93,6	362,9

\* Small and medium-sized enterprises



# Key deliverables of non-competitive research

---



- Establishment of common databases
- New tools for identification of drug targets
- Standardization of models and assays for drug efficacy and safety
- Patient reported outcomes
- Classification of diseases





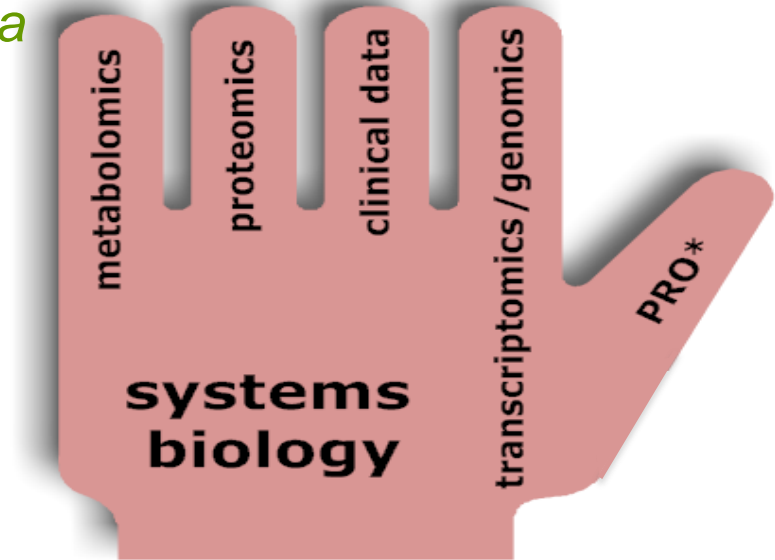
Paves the way towards a *new classification of asthma* and personalized treatments for patients

## 38 Partners

- 9 EFPIA companies
- 23 Academic institutions
- 3 Patients' organizations
- 3 SMEs

## First achievements

- ✓ A new stepwise algorithm for the stratification of patients with severe asthma



Diagnosis and definition of severe refractory asthma: an international consensus statement from the Innovative Medicine Initiative (IMI)

Elisabeth H Bel,<sup>1</sup> Ana Sousa,<sup>2</sup> Louise Fleming,<sup>3</sup> Andrew Bush,<sup>4</sup> K Fan Chung,<sup>5</sup> Jennifer Versnel,<sup>6</sup> Ariane H Wagener,<sup>1</sup> Scott S Wagers,<sup>7</sup> Peter J Sterk,<sup>1</sup> Chris H Compton,<sup>8</sup> on behalf of the members of the Unbiased Biomarkers for the Prediction of Respiratory Disease Outcome (U-BIOPRED) Consortium, Consensus Generation<sup>9</sup>

*Thorax*, 66: 910-7 (2011)



# PRO-ACTIVE



Activity Monitor

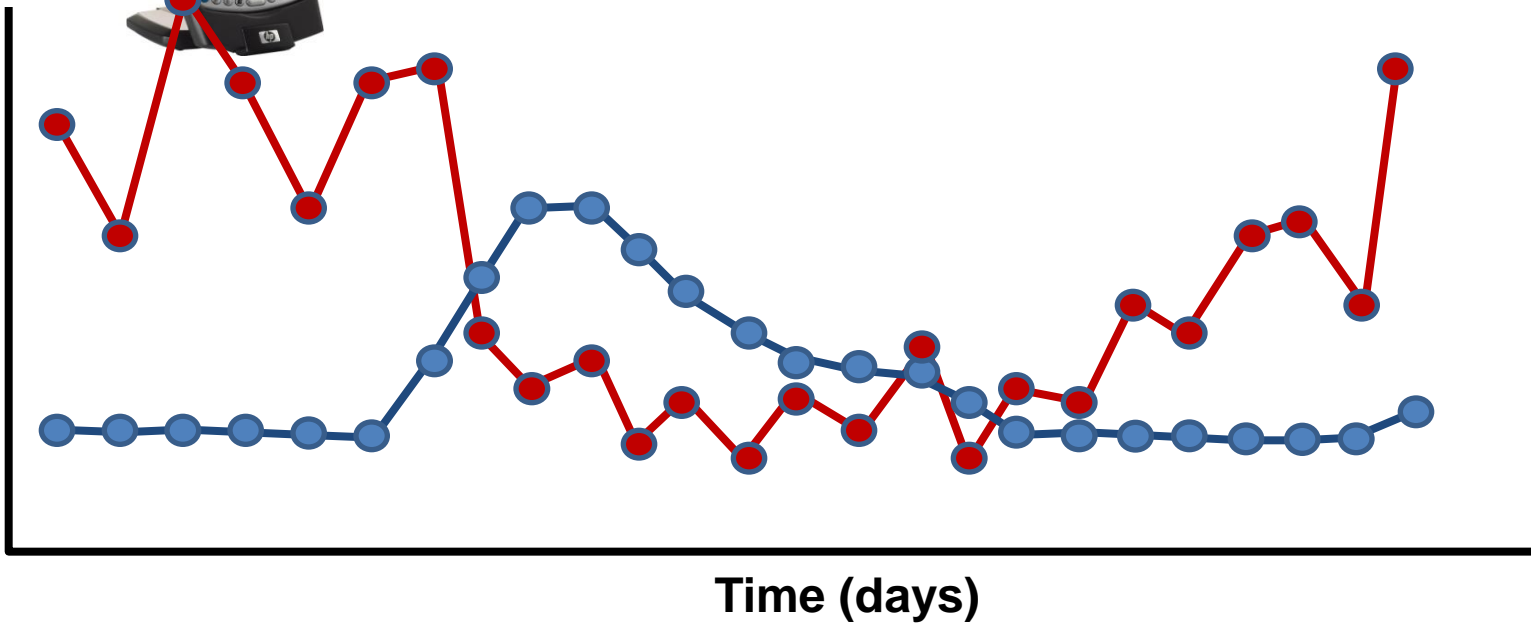
Amount of activities



PDA for E-PRO

Symptoms / other dimensions

Symptoms / PA  
Adaptations



- **Eu2P: online training: Master in Pharmacovigilance and Pharmacoepidemiology**
  - first courses started Autumn 2011
  - applications now open for Autumn 2012 intake
  
- **SafeSciMET: training courses in drug safety**
  - 9 courses held in 2011
  - applications now open for six new courses  
(Leiden, Guildford, Copenhagen, Basel, Lyon, Stockholm)



- **PharmaTrain: pan-European network for training in Medicines Development**
  - European Training Syllabus for Pharmaceutical Medicine
  - Accreditation of Centres of Excellence: shared standards
  - Expanding to academic network in Eastern-EU countries
  
- **EMTRAIN: E&T platform covering entire drug life cycle**
  - On-Course: biomedical post-graduate course catalogue  
= the **most comprehensive** portal in medical R&D courses  
in Europe

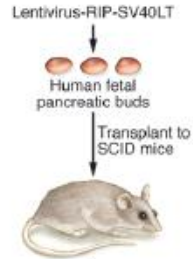


# SMEs in ongoing projects



SME in Calls 1-3		
Type	N	IMI JU Funding (€ Million)
Biotech	43	29,4
IT/data management	10	4,2
Project management	3	4,7
<b>Total</b>	<b>56</b>	<b>38,3</b>





Related Commentary, page 3395  Technical advance

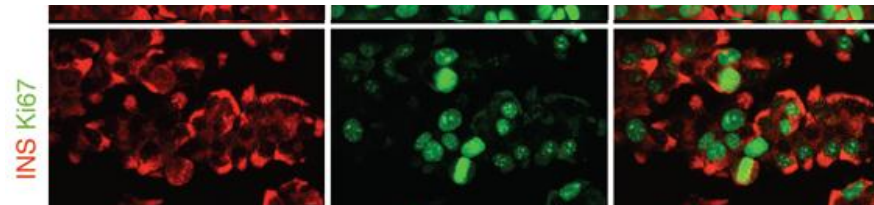
## A genetically engineered human pancreatic $\beta$ cell line exhibiting glucose-inducible insulin secretion

Philippe Ravassard,<sup>1,2,3</sup> Yasmine Hazhouz,<sup>2,4</sup> Séverine Pechberty,<sup>4,5</sup> Emilie Bricout-Neveu,<sup>2,4</sup>

# Finally! A human pancreatic $\beta$ cell line

Gordon C. Weir and Susan Bonner-Weir

Section on Islet Cell Biology and Regenerative Medicine, Research Division, Joslin Diabetes Center, and Department of Medicine, Harvard Medical School, Boston, Massachusetts, USA.



The Journal of Clinical Investigation <http://www.jci.org> Volume 121 Number 9 September 2011



*Builds a large searchable database containing drug toxicity-related data extracted from relevant pharmaceutical pre-clinical legacy reports*

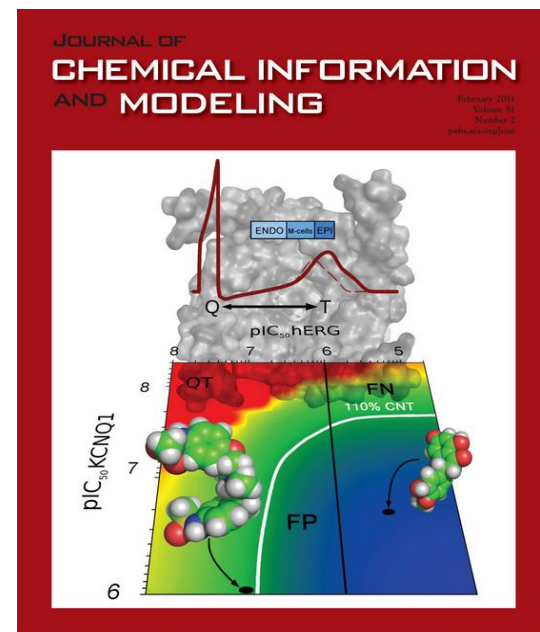
*Develops innovative methodological strategies and novel software tools to better predict in silico the toxicological profiles of new molecular entities in early stages of the drug development pipeline, using its database background*

## 25 Partners

- 13 EFPIA companies
- 8 Public organisations
- 4 SMEs

## First achievements

- ✓ An innovative multi-scale modelling strategy for the prediction of cardiotoxicity has been developed, successfully tested and published



*J. Chem. Inf. Model.* 51:483-92 (2011)

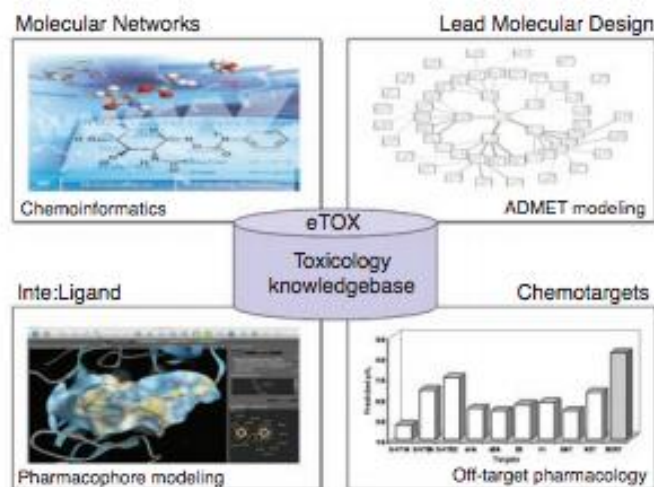


## Shaping the future of safer innovative drugs in Europe

### To the Editor:

An Editorial entitled “Members need only apply” published in the July issue<sup>1</sup> expressed concerns about the input of small- to medium-sized enterprises (SMEs) into the agenda of the Innovative Medicine Initiative (IMI) Joint Undertaking. The editorial argued that the SMEs currently participating in IMI projects do not represent the whole spectrum of companies that make up the innovative biotech space in Europe. We would like to address these criticisms in the context of the eTOX consortium, one of the projects funded following the IMI’s first call for proposals in 2008 and specifically singled out for comment in the Editorial.

The eTOX consortium comprises 11 European pharmaceutical companies, 8



<sup>1</sup>Chemotargets, IMIM-Hospital del Mar, and University Pompeu Fabra, Barcelona, Catalonia, Spain. <sup>2</sup>Inte:Ligand, Vienna, Austria. <sup>3</sup>Lead Molecular Design, Sant Cugat del Vallès, Spain. <sup>4</sup>Molecular Networks, Erlangen, Germany.  
e-mail: [jmestres@imim.es](mailto:jmestres@imim.es)

**Figure 1** Innovative SME contributions to the integrative *in silico* toxicology approach currently under development within eTOX, an IMI EU project.

*Nature Biotechnology*, 29: 789, 2011





*Clinical Pharmacology & Therapeutics* March 2012,  
<http://www.nature.com/doi/10.1038/clpt.2011.321>

# The Innovative Medicines Initiative: A European Response to the Innovation Challenge

M Goldman<sup>1</sup>

The Innovative Medicines Initiative (IMI) was launched in 2008 as a large-scale public–private partnership between the European Commission and the European Federation of Pharmaceutical Industries and Associations (EFPIA). With a total budget of €2 billion, the IMI aims to boost the development of new medicines across Europe by implementing new collaborative endeavors between large pharmaceutical companies and other key actors in the health-care ecosystem, i.e., academic institutions, small and medium enterprises, patients, and regulatory authorities. Projects conducted by IMI consortia have already delivered meaningful results, providing proof-of-concept evidence for the efficiency of this new model of collaboration. In this article we review recent achievements of the IMI consortia and discuss the growing interest in the IMI as a best-practice model to reinvigorate drug development.



# Overall project achievements

---

- **Over 45 scientific peer-reviewed publications**
  - in 38 different journals
  - median impact factor 5.192
  
- **89 % of projects reported at least 75 % of milestones achieved**



# Call 5 Time line

---

- **Open Info Day** **27 Feb 2012**
- **Call Launch** **early March 2012**
- **Stage 1 submission deadline** **16 May 2012**
- **Decision on Eols ranking** **29 Jun 2012**
- **Stage 2 submission deadline** **13 Sept 2012**
- **Decision on FPPs** **01 Oct 2012**
- **Grant Agreement signature** **end Dec 2012**



# Find project partners

---



- **IMI Partner Search Tool:**  
[www.imi.europa.eu/content/partner-search](http://www.imi.europa.eu/content/partner-search)
- **IMI States Representatives Group (SRG) member:**  
[www.imi.europa.eu/content/states-representatives-groups](http://www.imi.europa.eu/content/states-representatives-groups)
- **Health National Contact Point (NCP):**  
[cordis.europa.eu/fp7/health/ncp\\_en.html](http://cordis.europa.eu/fp7/health/ncp_en.html)



# Keep up to date



- **Webinar: 5 March 2012**
- Visit [www.imi.europa.eu](http://www.imi.europa.eu)
- Sign up to the **IMI Newsletter**
- Follow us on **Twitter: @IMI\_JU**
- Join the Innovative Medicines Initiative group on **LinkedIn**
- Questions? **E-mail us: [infodesk@imi.europa.eu](mailto:infodesk@imi.europa.eu)**

The screenshot shows the IMI website homepage. At the top, there is a navigation bar with links for Contact, Newsletter, and Links. Below this is a search bar and a main banner area. The main content is organized into several columns and sections:

- 2012 - Research topic preview:** A section with a blue background and white text, listing topics like 'European lead factory', 'Joint European compound library and screening centre', and 'Antibiotics research to tackle resistant bacteria'.
- ABOUT IMI:** A section with a photo of a doctor and patient, describing the initiative's goals and partners (EU and EFPIA).
- 5TH CALL OPEN INFO DAY - REGISTRATION OPEN:** A section announcing an Open Info Day on the 5th Call for proposals on Monday 27 February.
- PRESS RELEASES & MEDIA:** A section with a 'more' link.
- NEWSLETTER:** A section with a 'Subscribe to the IMI newsletter' link.
- PARTNER SEARCH TOOL UPDATED:** A section mentioning updates to the search tool.
- VISIT IMI'S ONGOING PROJECTS:** A section listing ongoing projects and funding.
- EDUCATION & TRAINING:** A section mentioning the SafeSciMET project and new courses.
- NEW IMI FUNDING RULES AND SIMPLIFIED PROCEDURES:** A section with links to press releases and factsheets.

5<sup>th</sup> Call Open Info Day - 27/02/2012 - Brussels



- **NewDrugs4BadBugs:**

**Tackling resistance to antibiotics:**

building partnerships to progress the discovery and development of novel antibiotic drugs to treat the most urgent infections

→ Preliminary outline available on [www.imi.europa.eu](http://www.imi.europa.eu)



# Thank you !

